



PRODUCT ASSEMBLY INSTRUCTIONS:



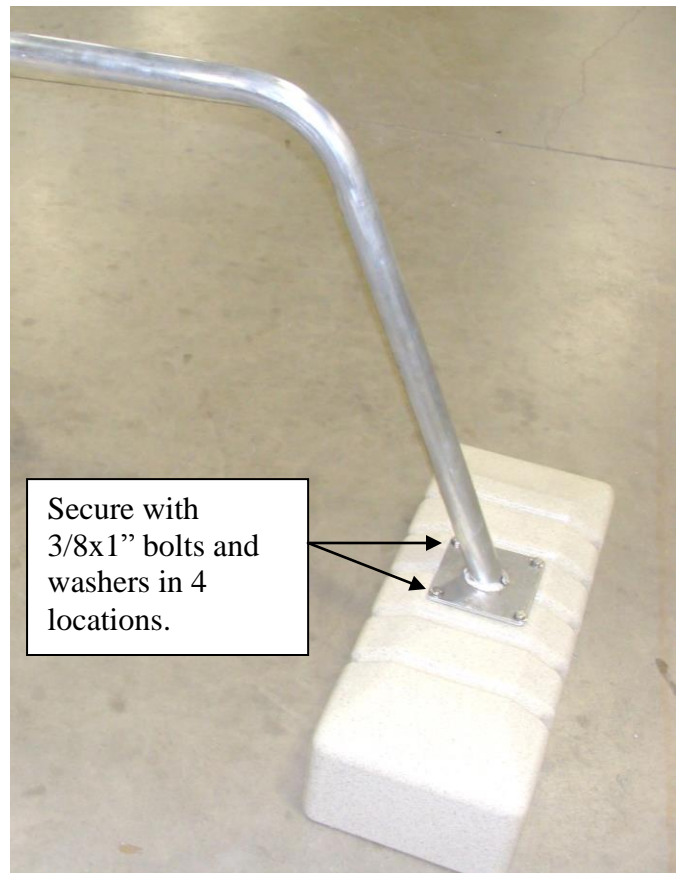
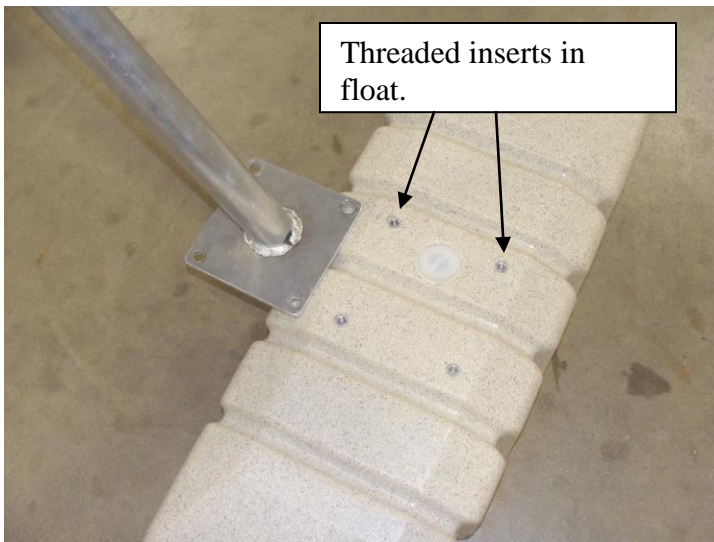
www.wavearmor.net

Item # | Product Name: #301246 Kayak Launch Assist

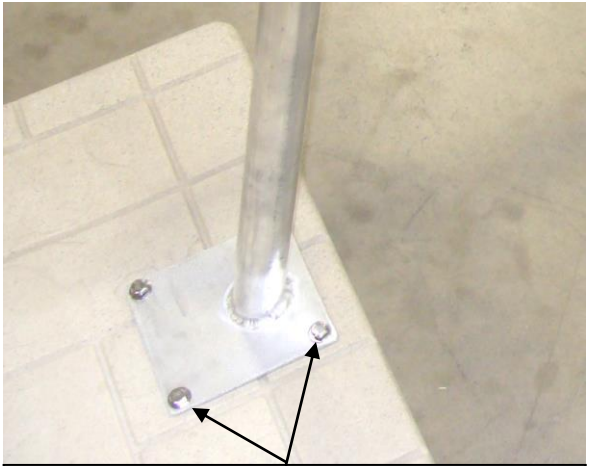
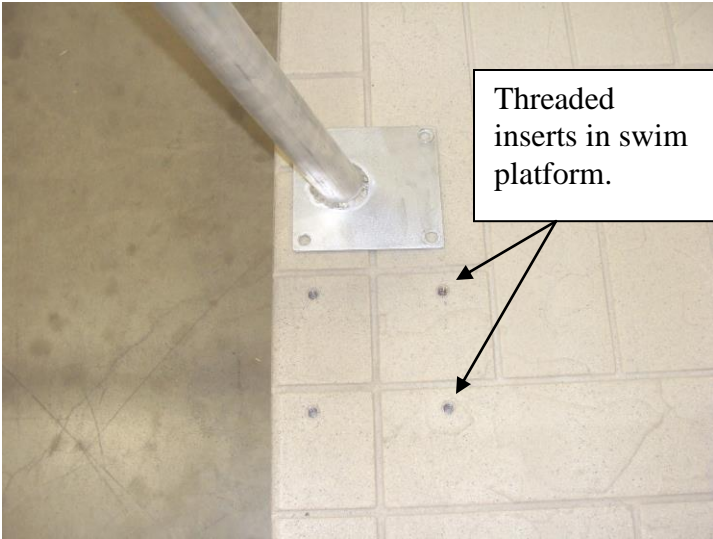
Parts List:	Tools Needed:
1. #301247 Kayak launch bar	1. 9/16" socket and ratchet
2. #301250 Kayak assist float	2.
3. #301248 Hardware bag	3.
4.	4.
5.	5.

Assembly Instructions:

1. Align plate on aluminum bar with the threaded inserts in the float. Each plate on the bar is a different size so only one of the plates will fit the float. Secure with the 3/8 x 1" bolts and washers in four locations.



2. Attach launch bar to the drop down swim platform. The platform is sold separately and is required for the Kayak Launch Assist. Align plate with the threaded inserts in the swim platform. There are two locations the bar may be attached. Either location may be used as preferred. Secure with the 3/8x1" bolts and washers.



Secure plate to swim platform with 3/8x1" bolts and washers in four locations.

