



Item # | Product Name: #300102 Wave Dock Post Cover

Parts List:	Tools Needed:
1. Polyethylene Post	1. Level (Optional)
2. Self-tapping screws (3)	2. Cordless Drill + Phillips Bit
3.	3.

Assembly Instructions:

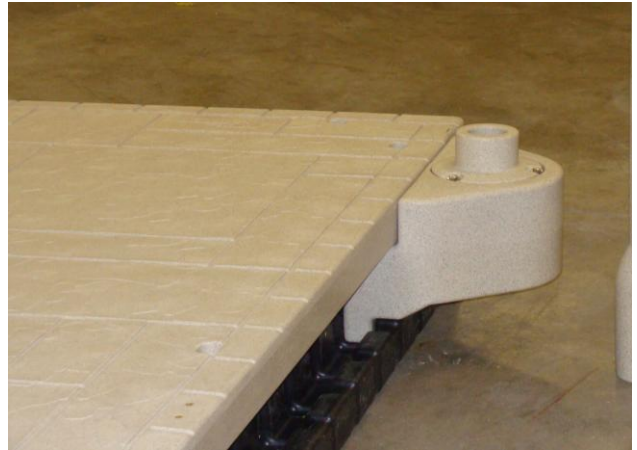
Attaching #300102 Dock Post Cover to Wave Dock Section

2" Schedule 40 pipe or other pipe with a 2-3/8" outer diameter is recommended for use with the Wave Dock. Calm conditions are recommended for attaching this item.

1. Using your dock layout plan, determine where posts will be located. It is recommended to place a post every 15–20 ft on each side of the dock and on the inside and outside corners of L-shapes.
2. With the dock post attachment and the dock post in place slide the Post Cover over the top of the post and down onto the Post Adaptor.
3. Align the Post Cover so it appears straight. A level may be used to ensure that it is straight.
4. Attach the Post Cover to the Pipe Adaptor using a self-tapping screw. Align the screw with one of the Pipe Adaptor bolts. About an inch from the bottom of the Post Cover attach the screw using a cordless drill.
5. Repeat step 4 for the other two screws. Use the level and adjust the Post Cover so it is straight before attaching the screws.



Part Shown: #1



Post Attachment and Pipe Adapter shown in position



Self tapping screw attached



Post Cover attached and in place