



411 West Congress St., Maple Lake, MN 55358 Toll Free 877-466-8837 www.wavearmor.net

Post Attachments (22926 & 21951) to Wave Port - Assembly Instructions:

Attach any post attachments to a Wave Port while on land after attaching any hinge assemblies.

There are six locations on each Wave Port where a post attachment can be installed.

Post attachments installed on the SIDE of the Wave Port use a 16" C-Clamp (Part T) and the SIDE Post Attachment (Part W), and post attachments on the FRONT of the Wave Port use a 24" C-clamp (Part U) and the FRONT post attachment (Part E).

2" Schedule 40 pipe or other pipe with a 2-3/8" outer diameter is recommended for use with the Wave Dock. For 4–6" pilings, use the post attachment without the pipe adapter.

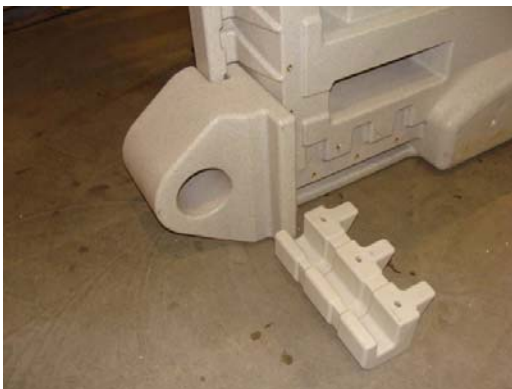
1. Slide a post attachment (Part E) into either the front or side channel of the Wave Port (Part J) depending on your chosen location. Be sure to line up the two threaded inserts in the Front post attachment with the holes in the decking. The side post attachments do not have any inserts to line up. Use a mallet if necessary.
2. Insert two bolts and washers (Parts 2 & 3) through the Wave Port decking into the threaded insert of the post attachment and tighten on the Front Post attachment.
3. Tilt the Wave Port on its side to permit access to the bottom of the port or put blocks under the Port so it is lifted off the ground. *For safety, have a helper hold the port upright throughout the installation.*
4. Slide a 16" or 24" C-clamp (Part T or Part U—see note above) over the assembled post attachment against the bottom of the port, lining up the holes in the C-clamp with the threaded inserts in the bottom of the port..
5. Attach the C-clamp with 3 bolts and washers (Parts 2 & 3).
6. Repeat with any remaining post attachments, tilting the Wave Port as necessary.
7. Lay the Wave Port back down on the ground.
8. Insert a pipe adapter (Part F), long end first, into each post attachment, lining up the holes with the threaded inserts in the post attachment.
9. Insert 3 bolts and washers (Parts 2 & 3) through the holes of each pipe adapter and into the threaded inserts in the post attachment and tighten.



Front Post Attachment Kit



Post attachment at front of Port



Post Attachment & 24" C-Clamp



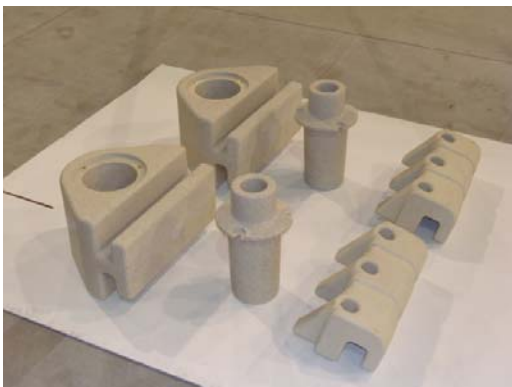
C-clamp bolted into place at Port front



Pipe Adapter bolted in place



Wave Port with two Post Attachments at the front



Side Post Attachment Kit



Post Attachment bolted into place at the side front position



Post attachment bolted into place at the side rear position



Port with two Side Post attachments

Depending on the options you purchased, you may not have all the parts shown below. Before beginning assembly, be sure to familiarize yourself with the parts.

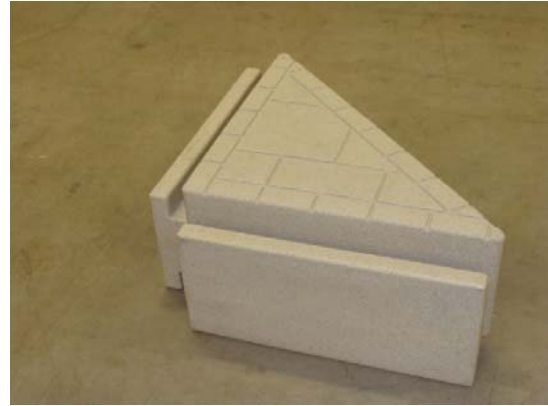
Part	Name
A	Dock Section
B	Corner Gusset
C	24" H-Beam
D	50" H-Beam
E	Post Attachment
F	Pipe Adapter
G	Vertical Bumper
H	Horizontal Bumper
I	Dock Ramp
J	Wave Port
K	Bow Stop
L	Tie-Down Cleat - Small
M	Flip up Cleat - Large
N	Entrance Slide
O	Port Front and Dock Hinge
P	Side Hinge
Q	Universal Hinge
R	Linkage Arm
S	6' Entrance Deck
T	16" C-Clamp
U	24" C-Clamp
V	16" H-Beam
W	Post Attachment ,7" Port Side
X	Entrance Plug
Y	Entrance Slide
Z	Top Roller Plug
1	¼ x 1 ½ Flat Head Machine Screw
2	3/8 x 1 ½ Bolt
3	3/8 Washer
4	3/8 x ¾" Bolt
5	½" Shoulder Bolt
6	Fender Washer for Shoulder Bolt

Tools Needed

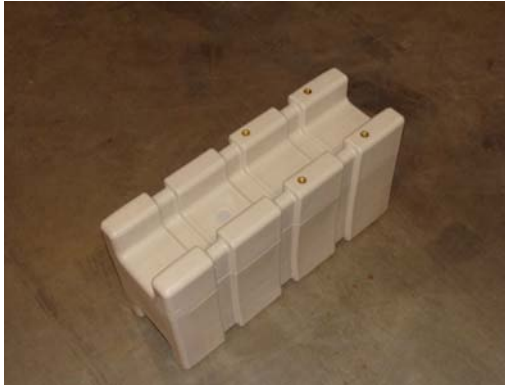
9/16" socket and ratchet with extension
 Phillips screwdriver if installing bow stop on Wave Port
 Dead Blow Mallet, or a maul and block of wood



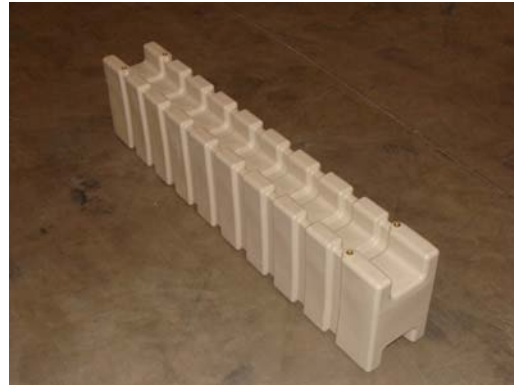
A – Dock Section



B - Corner Gusset



C – 24” H Beam



D – 50” H Beam



E - Post Attachment Port
Front & Wave Dock



F - Post Attachment
Insert/Adapter



G - Vertical Bumper



H - Horizontal Bumper 24"



J - Wave Port - 6 Foot



K- Bow Stop



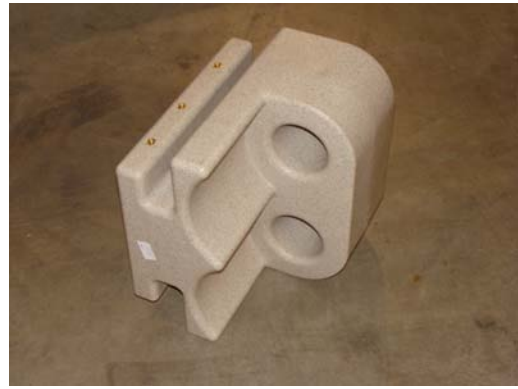
L - Fixed Cleat - Small



M - Flip-Up Cleat



N - Entrance Slide



O - Port Front and Dock Hinge



P - Side Hinge- Port



Q - Universal Dock Hinge



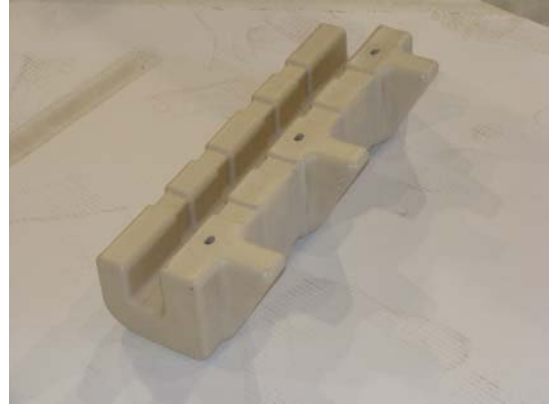
R - Linkage Arm 24"



S - 6 Ft Linkage/Entrance Deck



T – 16” C Clamp



U – 24” C Clamp



V – 16” H Beam



W - Side Post Attachment – Port Only



1 – ¼ x 1 ½ flat head machine screw



2 – 3/8 x 1 ½ bolt
3 – 3/8” washer



4 – 3/8 x ¾ Bolt
3 – 3/8” washer



5 – ½” Shoulder Bolt
6 – ½” Fender washer