

Wave Armor®



**PREMIUM • RESIDENTIAL • COMMERCIAL • FLOATING DOCKS
PORT SYSTEMS • MARINE ACCESSORIES**



WWW.WAVEARMOR.COM

411 CONGRESS STREET WEST
MAPLE LAKE, MN 55358

877-832-6945

© COPYRIGHT 2021 RHINO, LLC
ALL RIGHTS RESERVED

Wave Armor®

2022 EDITION



PROUDLY MADE IN THE LAND OF THE FREE BECAUSE OF THE BRAVE



Wave Armor



PREMIUM MODULAR FLOATING DOCK SYSTEM

Welcome to Wave Armor - the most advanced generation of modular floating dock systems. Our unique fabrication process creates a premium product integrating both unrivaled durability and functionality. Offering the quintessential resort experience right at the door of your waterfront home. Wave Armor products are formulated with only the finest materials and constructed under highest industry standards to provide our customers premium quality and performance while minimizing maintenance and showcasing modern, state of the art design. We don't stop there, with a full line of accessories offered, our modular, fully integrated dock system gives virtually endless options to meet your very own needs and bring your waterfront living dream to life!



WATERFRONT LIVING *REIMAGINED*

At Wave Armor, we aim to make the most of your waterfront experience! Our modular design with fully integrated accessories make it simple to customize your dock layout to maximize use of space and make it easily accessible and secure for you to enjoy your favorite water activities like boating, jet skiing, paddle boarding, kayaking and swimming. Wave Armor has incorporated a flagstone paver style design with our patented H-Beam hidden connection system, securing the dock underneath and creating a clean, flowing and slip-resistant surface. Gone are the days of concerns and injuries due to delinquent maintenance of outdated docks. We have left no stone unturned.

At Wave Armor we are dedicated to creating a dock system that conforms and enhances the experience of the waterfront lifestyle.

We have made it effortless and enjoyable to create memories and establish traditions that last a lifetime!







Wave Armor®



LIFE ON THE WATER

EVERYTHING FROM ONE SOURCE

WORLD OF WAVE ARMOR	1-8	PWC PORT MOUNTS & ACCESSORIES	41-43
DOCK BUILDER	9-10	GENESIS BOAT PORT	45-46
WAVE DOCK SECTIONS & ACCESSORIES	13-26	EXTREME BOAT PORT	47-48
UNIVERSAL ACCESSORIES	31-32	BOAT PORT MOUNTS AND ACCESSORIES	49-52
PRO PORT & ACCESSORIES	35-36	RAFT & ACCESSORIES	53-54
APEX & APEX SPORT PORT	37-38	KAYAKS	55-56
SLX PORT	39-40		



Wave Armor premium modular dock systems are designed to be practical, timeless and comfortable.

We believe that modern waterfront living isn't just a trend, it's a lifestyle.

Our vision is to combine the best materials, modern design and innovative solutions to bring outstanding experiences to those who we are sharing our passion of waterfront living.

LIVE LIFE BEYOND THE SHORELINE



A MODERN DOCK FOR MODERN FAMILIES



It's the 3rd summer for us at our first waterfront home. Moving to the lake was our family goal from day one, as we love to be on the lake, enjoying all of the on-the-water activities like water skiing, wake boarding or just playing with the kids.

In the first year living at our lake home, we started learning about dock maintenance.

Refinishing wooden decks, making sure all of the rusty nails are fixed and assuring that the dock is safe for our kids and guests. It was time we started looking into other dock options, and after considering our lake's fluctuating water levels, and wanting something with a lot less maintenance, we decided to invest in the Wave Armor floating dock system!

It paid for itself in the first year when our lake got hit with the highest water levels in over a decade! Watching our neighbors nearly miss out on all the summer fun when they couldn't use their dock, lost half their decking and didn't have access to their boat - we knew our investment in quality was the right move.

To our surprise, the second year challenged the residents of our lake with extremely low water levels and that's when we fully appreciated the modularity of the Wave Armor dock system. We simply reconfigured the layout by using patio sections to add length, and we also were able to add on to the dock and accessorize it two years after we have purchased it, which was really helpful with our family budget.

Our dock became an extension of our home, a fun place to play for our kids and a perfect spot to watch sunsets on the water.

- The Kuzma Family





CABIN UPGRADE

LAKE SHAMINAEU



I had my new Wave Armor dock installed in June. I have to say it was an amazing decision to choose this floating dock. I never have to worry about adjusting the dock height in this drought of a summer! The aesthetics of a Wave Armor dock turns heads and has everyone on the lake asking about it. There are so many accessories that are easy to install, allowing endless customization.

I highly recommend the step down platforms! We have installed two of them side by side and it's a favorite spot on the dock for our kids!

- Dave Meyer



PLAN YOUR *DREAM DOCK*

Use our custom Dock Builder to create your dream dock from your computer or tablet. Here you can customize a dock to best fit your unique personal or commercial needs. Save, print and submit your layout by emailing Wave Armor for a quote. Our customer service team is available to help you along the way with any questions you might have.

STEP 1: SIZE AND SHAPE

Determine what size and configuration will suit your needs.

Do you need a U-Shaped, T-Shaped, L-Shaped, or Extended Surface Area? Do you have a boat? Personal Watercrafts? Kayaks, Paddle boards? How you use your dock will help determine the layout.

STEP 2: LOCATION

Evaluate your waterfront location's depth, bottom composition and potential for fluctuating water levels. This will help to choose the best mounting option for your dock.

STEP 3: ACCESSORIZE

Decide which accessories will enhance your enjoyment of the waterfront life.

Wave Armor accessories create a fully integrated finished look and feel, while maximizing ease of use.

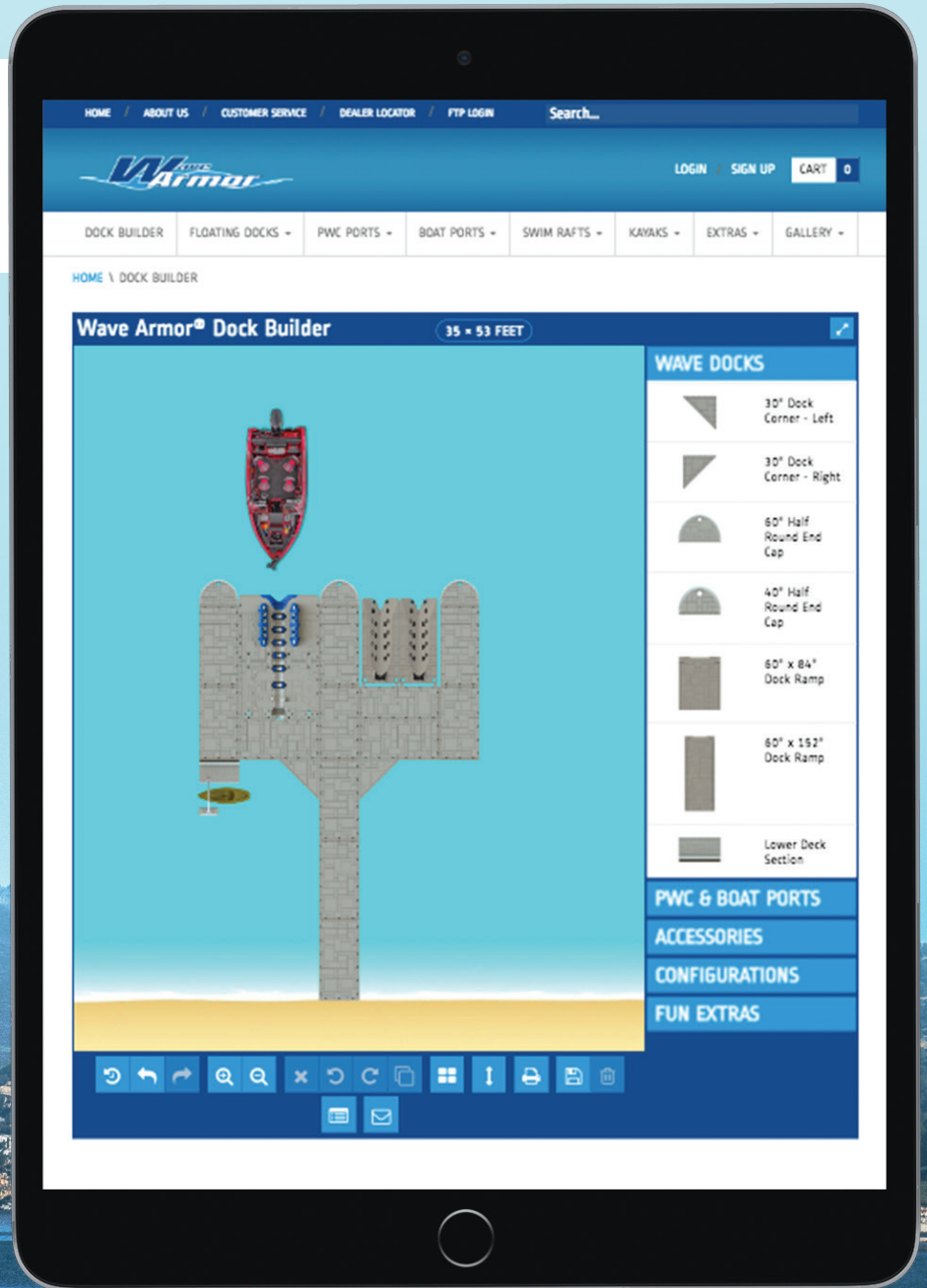


**TO PLAN YOUR
DREAM DOCK VISIT:**

WWW.WAVEARMOR.COM/DOCK-BUILDER



 **SCAN ME**



WHO ARE WE?

At the foundation and core of Wave Armor, is our parent company — Rhino.

Rhino is a 26 years old rotationally molding company started by Rick Johanneck with nothing but a goal and determination.

Rhino supports four premium quality brands: Wave Armor, Otter Outdoors (ice fishing), Beavertail Products (hunting/waterfowl), and Rhino Tuff Tanks (stackable tanks storage systems).

As a fast-growing manufacturing company, we understand how important it is to supply increasing demands for our products and we are able to do that with our state-of-the-art CNC facility — American Roto Tool. This 27,500 sq. foot newly expanded facility is fully dedicated to building the highest quality molds using our 9 CNC machines.



AT THE FOREFRONT OF *INNOVATIVE DESIGN!*

Unlike other plastic processes, rotomolding results in a much more durable and flexible product with high impact tolerance and consistent wall thickness.

Empowered by drive for excellence Rhino continues to lead the industry with its unique innovative perspective, consistent high quality and low scrap processes.

What started as a modest 150 x 100 square foot shop in rural Minnesota has grown to 285,000 square feet of state-of-the-art manufacturing, tool shop, and warehousing spread across 4 buildings and 20 acres of land. Rotational Molding lives thick in the blood of the Johanneck family.



SEE ALL THE INNOVATIVE PRODUCTS AT: WWW.WAVEARMOR.COM

LET'S GROW **TOGETHER**



2018

THEN & NOW



2021

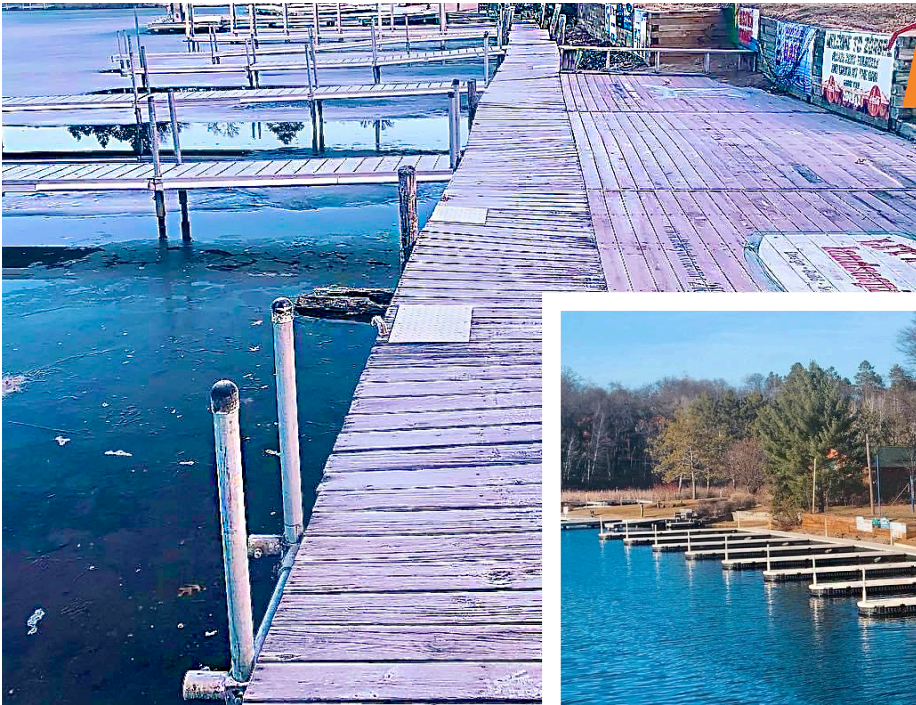
GRAND VIEW LODGE RESORT IN NISSWA, MN. INSTALLED BY NISSWA MARINE.

Wave Armor modular floating dock system is the best choice for marinas, resorts, restaurants and rental operations on the water.

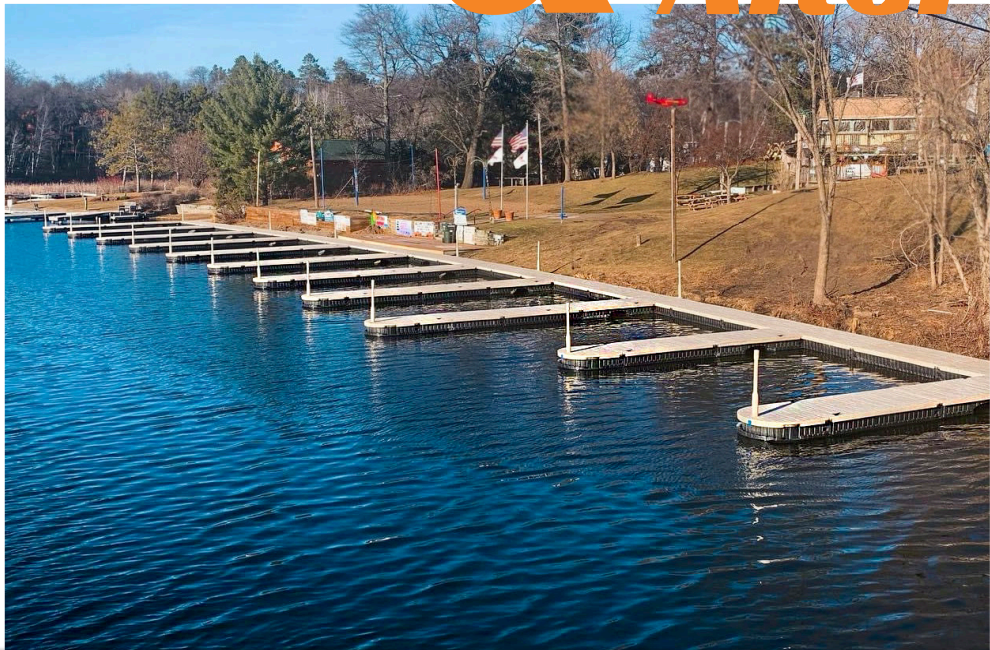




ZORBAZ ON GULL LAKE.



Before & After



With our modular designs it's possible to:

- *Customize!*
- *Add on!*
- *Re-configure!*
- *Accessorize!*



Wave
Armor



TOP TO BOTTOM BUILT TO LAST.

Solid durable surface.

The top deck features an exclusive Flagstone textured finish for low maintenance waterfront living. Durable Rotomolded polyethylene construction is built for peace of mind for years to come. Added UV stabilizing components will provide protection against fading, cracking or chipping and eliminate the need for painting or resurfacing which frees up more valuable time for fun on the water.

Easy to assemble dock sections & accessories.

Top deck attachment slots and molded-in H-Beam connection channels along the perimeter allow for attaching a wide variety of Wave Dock accessories and infinite layout options.

Built to last. Engineered with corrugated interior bottom float, filled with marine grade EPS foam for additional strength, and superior integrity creating a solid walking surface.

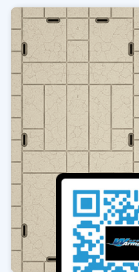


Engineered to utilize the water's surface for stability. Unique recessed pockets on the bottom floats underside vacuum-seal to the water's surface providing unparalleled stability.

SCAN THE
QR CODES
FOR MORE
INFORMATION



301894



300444

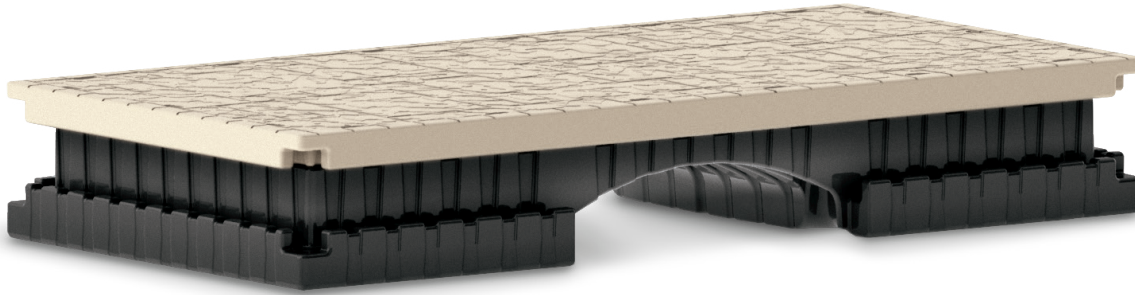


300445



301937

ITEM #	DESCRIPTION	DIMENSIONS	WEIGHT	CAPACITY
300444	30" x 60" Dock Section	30" W x 60" L x 16" H	90 lbs.	600 lbs.
301894	60" x 60" Dock Section	60" W x 60" L x 17" H	193 lbs.	1,600 lbs.
300445	40" x 120" Dock Section	40" W x 120" L x 16" H	285 lbs.	2,000 lbs.
301937	60" x 120" Dock Section	60" W x 120" L x 17" H	385 lbs.	3,000 lbs.



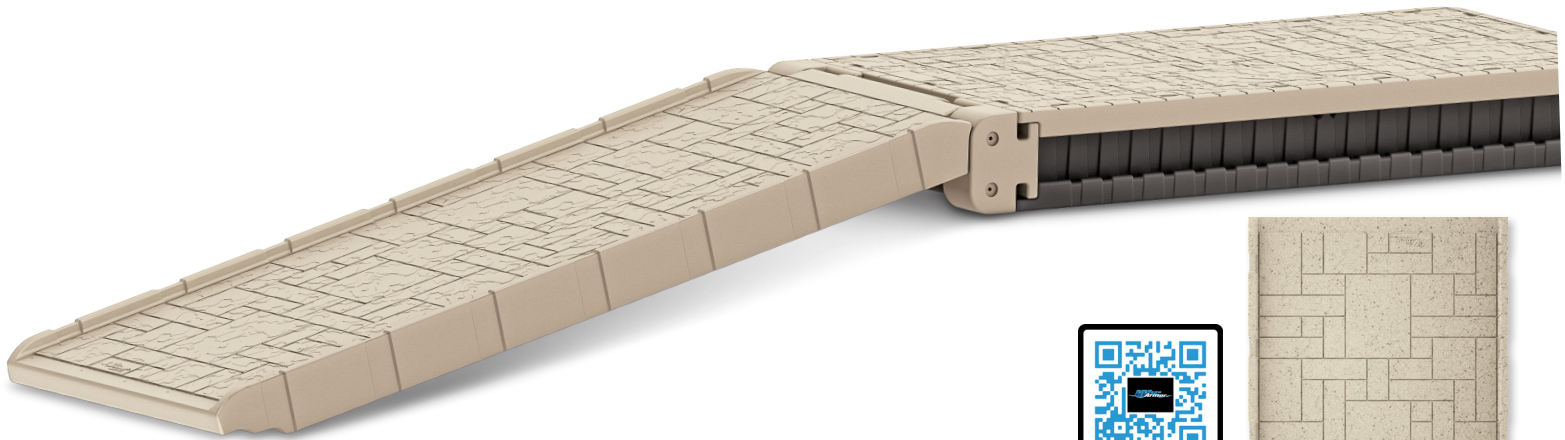
BRIDGE DOCK SECTION

The innovative Bridge Dock Section design, featuring an arch strategically located in the middle of the section, allows water to flow freely underneath, reducing water pressure, algae, and debris build up. A 60" x 120" dock section with a bridged bottom is engineered to provide the same buoyancy as a standard dock section.



ITEM #	DESCRIPTION	DIMENSIONS
301592	Bridge Dock Section with Bridge Cutout	60" W x 120" L x 18.5" H

301592



DOCK RAMPS

Wave Armor's hinged dock ramps create a flush, continuous walking surface from your dock to shoreline. Available in 2 sizes and featuring matching Flagstone textured finish provide safe and easy, non slip access on/off the dock.

- The 12' Dock Ramp features a raised side lip for railing mount options.

ITEM #	DESCRIPTION	DIMENSIONS
300055	7' Dock Ramp	60" W x 84" L
301518	12'8" Dock Ramp	60" W x 152" L



300055



301518



H-BEAM CONNECTION KITS

Connect dock sections quickly and easily. The patented Wave Armor H-Beams feature molded-in inserts that align with the slots on the top deck of each Wave Armor Dock Section. With molded-in handles, H-Beams simply slide into the molded-in H-Beam channels on any side of dock sections.

- Hidden, secure connection with uniform rigidity and flexibility.
- Made of high impact high density polyethylene, Rotomolded construction.



Solid stainless steel anchor insert with anti-galling coating.

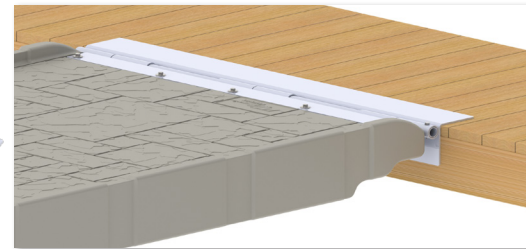
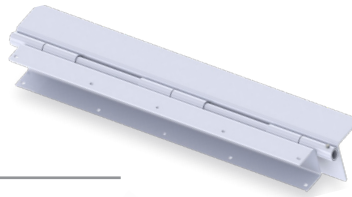
ITEM #	DESCRIPTION	PIECES	APPLICATIONS
300065	24" Long H-Beam Kit	2	Recommended for docks that requiring annual removal (standard dock sections)
301520	31" Long H-Beam Kit	2	Connect two 40" x 120" Dock Sections End to End, 40" corner gusset, 40" Half Round
300067	50" Long H-Beam Kit	2	Connect two 60" x 120" Dock Sections Side to Side, Connect two 60" x 120" Dock Sections End to End.

12' RAMP ABUTMENT HINGE

12' Ramp Abutment Hinge is designed to link the Wave Dock to a solid structure on land for added stability.

- Hardware included for Wave Dock install only.

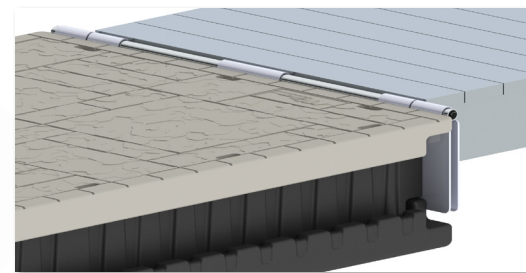
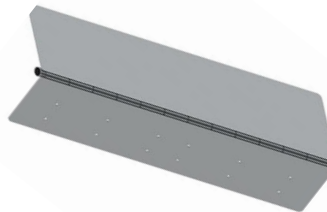
ITEM #	DESCRIPTION
301661	12' Ramp Abutment Hinge



UNIVERSAL DOCK HINGE

The Universal Dock Hinge is designed with two connecting HD aluminum plates that secure into the Wave Dock H-Beam channel and connect to existing floating docks, custom ramps or gangways.

ITEM #	DESCRIPTION
301135	60" Universal Dock Hinge

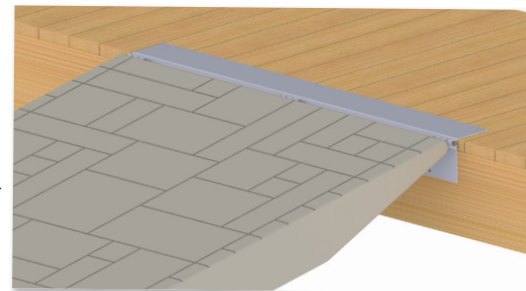


7' ABUTMENT RAMP KIT

7' Ramp Abutment Ramp Kit is designed to link the Wave Dock to a solid structure on land for added stability. Ramp not included.

- Hardware included for Wave Dock install only.
- 3 steel bars and 1 angle steel bracket.

ITEM #	DESCRIPTION
301509	7' Ramp Abutment Ramp Kit

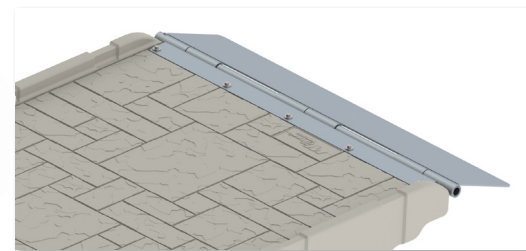
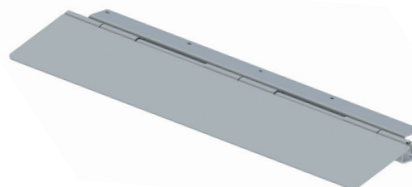


12' RAMP TRANSITION KIT

12' Ramp Transition Kit aluminum is designed to link the Wave Dock 12' ramp to a solid structure such as custom docks, seawalls and gangways and provide rigid transition.

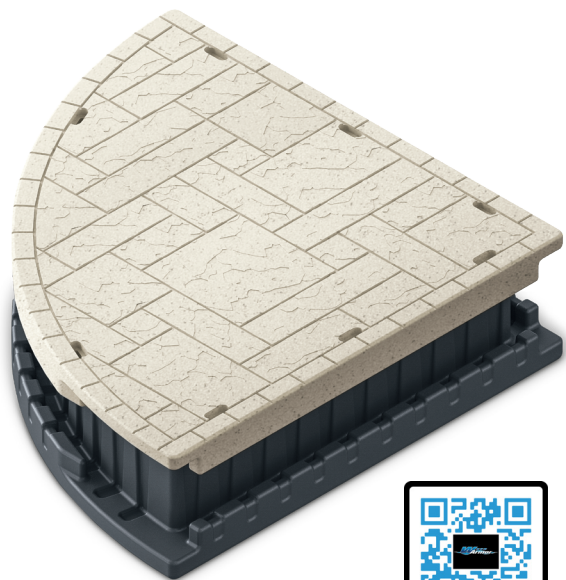
- Hardware included for Wave Dock install only.

ITEM #	DESCRIPTION
302121	12' Ramp Transition Kit





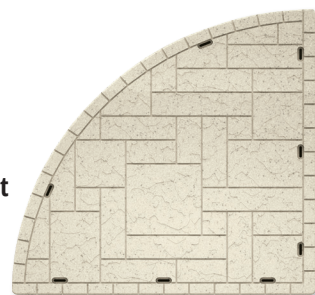
Wave
Armor



QUARTER ROUND DOCK SECTION

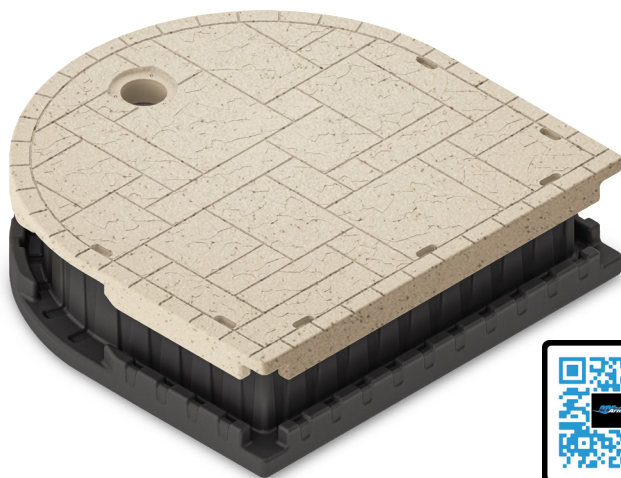
To deliver an unlimited amount of layouts and custom arrangements Wave Armor created a stylish and elegant 60" x 60" Quarter Round Dock section that effortlessly integrates with all Wave Armor dock elements.

- Installs with a 50" H-Beam connector.



301841

ITEM #	DESCRIPTION	DIMENSIONS	WEIGHT	WEIGHT CAPACITY
301841	60" Quarter Round Dock	60" W x 60" L	150 lbs.	1,220 lbs.

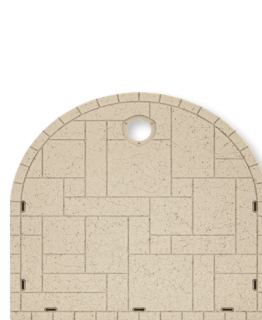


HALF ROUND DOCK ENDS

Added to the end of a Wave Armor Dock Section, a Half Round Dock End enhances the architectural design and provides a safe entry when docking boats or jet skis.

- The updated half round is now a 2 piece section, matches seamlessly with other Wave Armor dock sections and has improved stability.
- Installs with a 50" H-Beam connector.

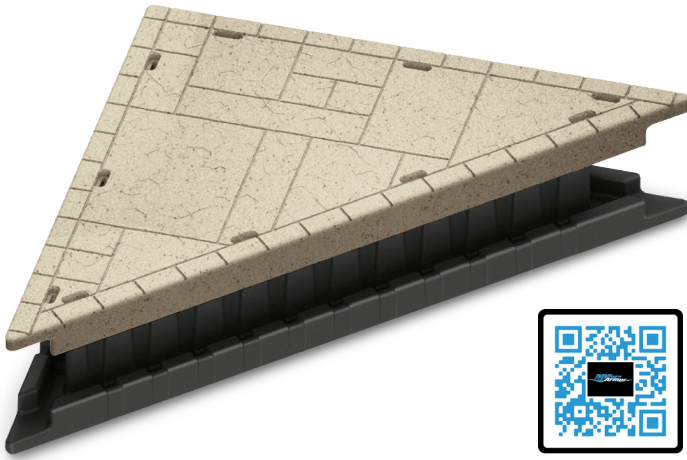
ITEM #	DESCRIPTION	DIMENSIONS	WEIGHT
302055	40" Half Round Dock End	40" W x 28" L	90 lbs.
301910	60" Half Round Dock End (2-piece)	60" W x 40" L	160 lbs.
301531	Bolt-in Cap (Option)	—	—



302055



301910

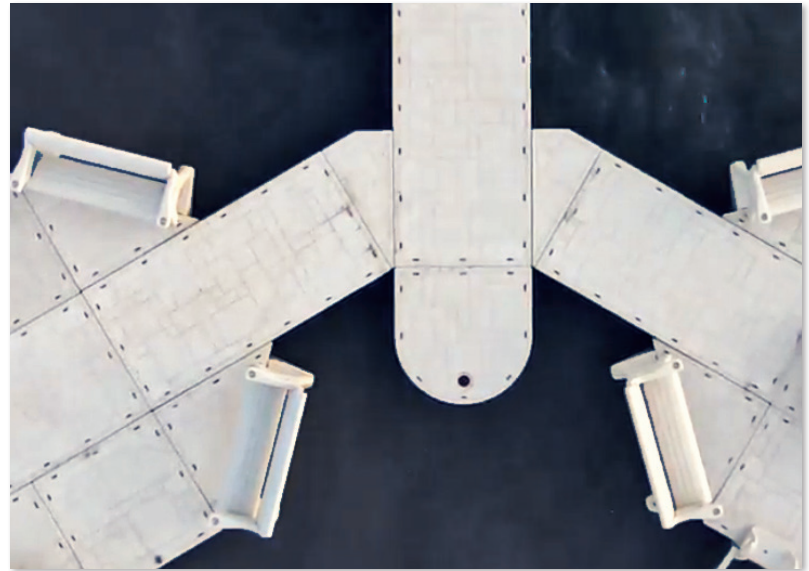
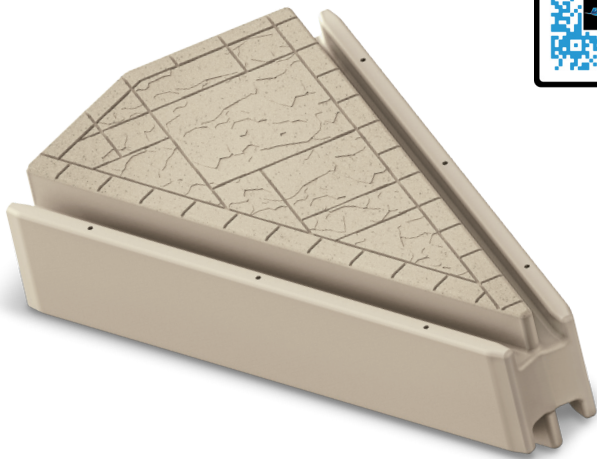
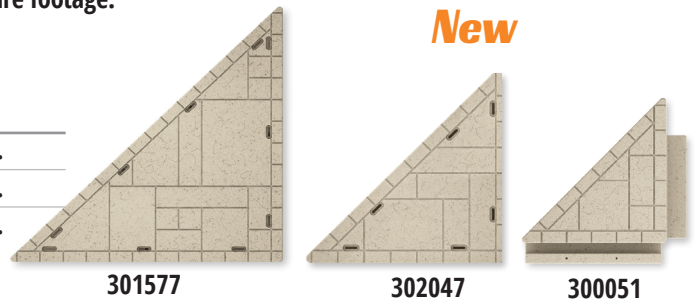


WAVE DOCK CORNERS

The Wave Armor Corner Dock Sections provide additional strength to the dock's layout by connecting the inside corners of two sections and expanding overall dock square footage.

- Maximizes design options for your custom dock layout.
- Installs with a H-Beam connector. (301577 requires 50" H-Beam Kit 300067)

ITEM #	DESCRIPTION	DIMENSIONS	WEIGHT
300051	30" Wave Dock Corner	30" L	25 lbs.
302047	40" Wave Dock Corner	40" L	55 lbs.
301577	60" Wave Dock Corner	60" L	95 lbs.

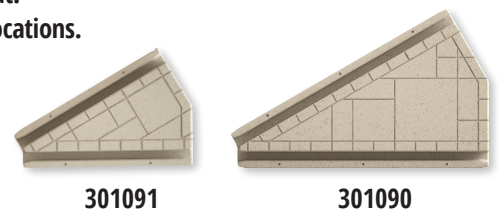


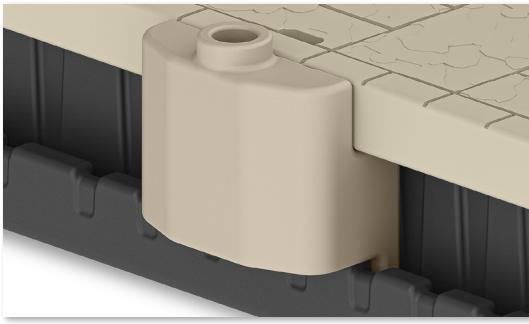
WAVE DOCK WEDGES

The Wave Armor Wedge Section creates a 30-degree angle allowing boat slips/piers to fan out. Saving space by narrowing footprint for multiple boat slips or for specific layout in narrow locations.

- H-Beam channel built-in.

ITEM #	DESCRIPTION	DIMENSIONS	WEIGHT
301091	40" Wave Dock Wedge	40" L	55 lbs.
301090	60" Wave Dock Wedge	60" L	80 lbs.



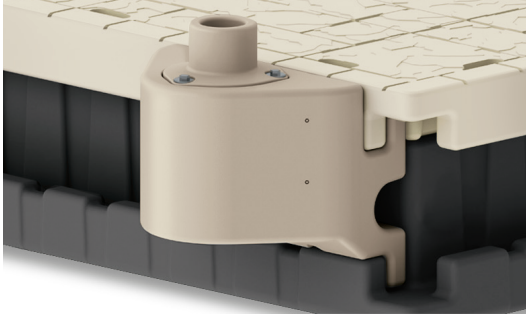


SLIM POST BRACKET KIT *New*

Designed to be more compact and accommodate 2" pipe without an additional pipe sleeve.

- Extends 4.5" from edge of the dock section.
- Hardware included.

ITEM #	DESCRIPTION	INCLUDES
302065	2" Slim Post Bracket	2

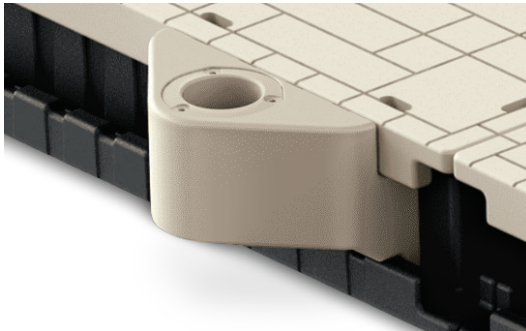


UTILITY CHANNEL POST BRACKET KIT

Designed to allow utility wires and cords to be safely stored behind the bracket.

- Easily slides into H-Beam channel.
- Each kit includes 2 Post brackets, 2 sleeves and hardware.

ITEM #	DESCRIPTION	INCLUDES
301608	2" Raised Utility Post Brackets	2
301609	3" Flush Utility Post Brackets	2
301610	4" Flush Utility Post Brackets	2

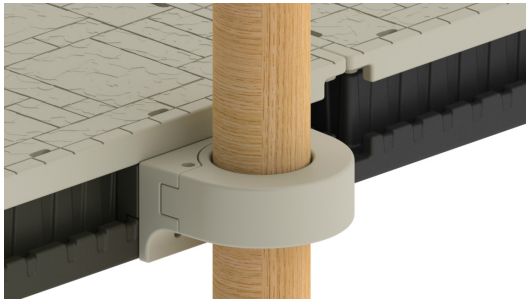


HEAVY DUTY DOCK POST BRACKET KIT

This heavy duty bracket secures dock posts to the Wave Dock System by sliding into the H-Beam channel. The best choice for mounting in tougher water conditions

- Each kit includes 2 Post brackets, 2 sleeves and hardware.

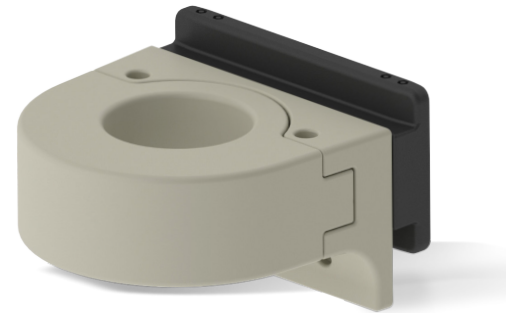
ITEM #	DESCRIPTION	INCLUDES
301526	2" Raised HD Post Brackets	2
301527	3" Flush HD Post Brackets	2
301528	4" Flush HD Post Brackets	2



PYLON HOOP KIT FOR WAVE DOCK *New*

Innovative design of these HD pylon hoops allows for installation of the Wave Dock with existing pylons!

- H-Beam channel installation.
- Rotomolded heavy duty construction.
- Available in 3 common sizes.
- Hardware included.



ITEM #	DESCRIPTION	INCLUDES	SIZE
302211	8" Poly Pylon Hoop Attachment Kit	1	Fits an 8-1/2" Pylon
302212	10" Poly Pylon Hoop Attachment Kit	1	Fits an 10-1/2" Pylon
302213	12" Poly Pylon Hoop Attachment Kit	1	Fits an 12-1/2" Pylon



ANCHOR CAP MOORING KIT

An alternative to pipe mounting, the anchor cap mooring kit is a secure attachment point for submersible anchor chain or cable.

- Simple H-Beam channel installation.
- Includes 1 Attachment and 1 Anchor Cap .

ITEM #	DESCRIPTION	INCLUDES
300493	Anchor Cap Mooring Kit	1

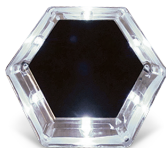


ANCHOR PIN MOORING KIT

The top adjusting mooring kit provides a secure attachment point for a submersible anchor chain.

- Includes 1 Dock Post Attachment and 1 Anchor Pin (chain not included).

ITEM #	DESCRIPTION	INCLUDES
301336	Heavy Duty Anchor Pin Mooring Kit	1



301126
Solar Dock Lights
(Qty 2)

Covering unattractive mounting pipes and adding an elegant touch, our 3 out of 4 models feature recessed pockets on the top for optional Wave Armor Solar Light (sold separately).



301262

302132

3302179

301278

POST COVERS

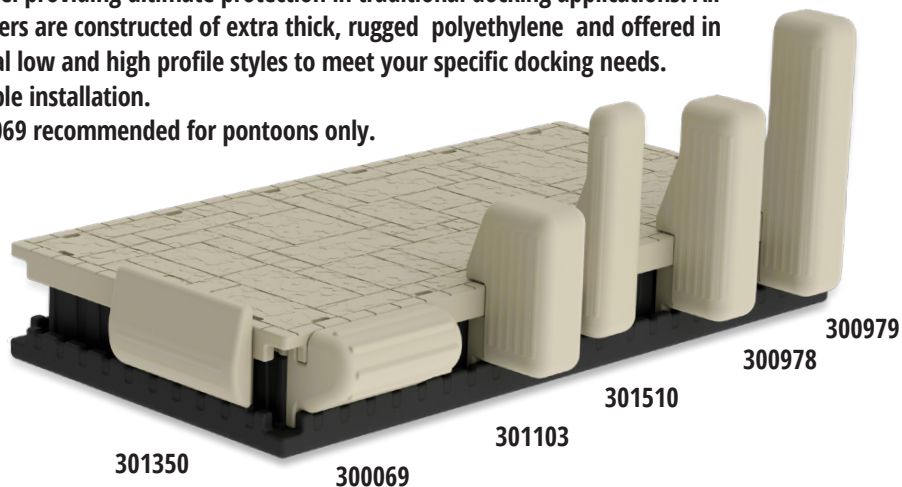
ITEM #	DESCRIPTION	HEIGHT FROM DOCK SURFACE	APPLICATION	SOLAR LIGHT OPTION	
301278/301538	Heritage Decorative Post	49.5" Tall	Set of 2/ 8	Installs into H-Beam Channel/Rope Holes	301126
301262/301537	Heritage Post Cover	49.5" Tall	Set of 2/ 8	Slides Over galvanized Post/Rope Holes	301126
302132/302133	Hex Post Cover	54" Tall	Set of 2/ 8	Slides Over Galvanized Post	301126
302179/302180	Round Post Cover	54" Tall	Set of 2/ 8	Slides Over Galvanized Post	—

BUMPERS



Wave Armor dock bumpers are designed to securely mount in the H-Beam channel providing ultimate protection in traditional docking applications. All bumpers are constructed of extra thick, rugged polyethylene and offered in several low and high profile styles to meet your specific docking needs.

- Simple installation.
- 300069 recommended for pontoons only.



301350

300069

301103

301510

300978

300979

ITEM #	DESCRIPTION	DIMENSIONS	EXTENDS ABOVE DOCK SURFACE	EXTENDS FROM DOCK EDGE	MATERIAL
301350	Slim Horizontal Bumper	27" L x 15" H x 5.5" D	3"	5.25"	Poly
301103	Small Vertical Bumper	23" H x 10" W x 11.5" D	12"	11.5"	Poly
301510	Slim Vertical Bumper	32" H x 10" W x 5.5" D	20"	5.5"	Poly
300978	Medium Vertical Bumper	32" H x 10" W x 11.5" D	20"	11.5"	Poly
300979	Large Vertical Bumper	42" H x 10" W x 11.5" D	30"	11.5"	Poly
300069	Horizontal Bumper	24" L x 12" H x 8.5" D	0	8.5"	Poly

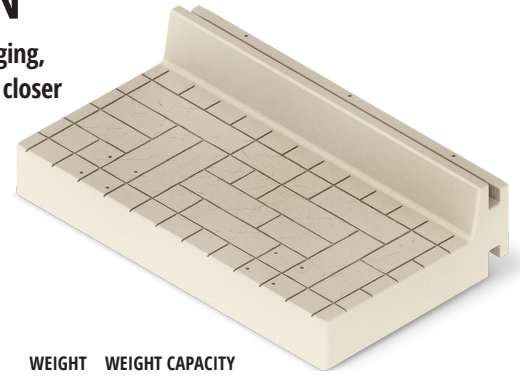




LOWER DECK SECTION

Ideal for water level activities and lounging, providing additional point of entry/exit closer to the waters surface.

- Build in H-Beam channel for easy installation.
- Hardware included.



ITEM #	DESCRIPTION	WEIGHT	WEIGHT CAPACITY
301096	Lower Deck Section	88 lbs.	400 lbs.



KAYAK ASSIST

The Kayak Assist mounts directly to the Wave Dock Lower Deck Section to provide a stable bar to hold on to when getting in and out of a kayak.

- Hardware included for Wave Dock install only.

ITEM #	DESCRIPTION	WEIGHT CAPACITY
301753	Kayak Assist Kit (lower deck, rail & float)	400 lbs.
301246	Kayak Assist (rail & float only)	



WAVE DOCK KAYAK RACK

Space saving, stylish design provides storage for kayaks & swim mats closest to the point of use without sacrificing valuable dock walkways.

- Molded-in eye loops for easy tie-down attachment.
- Easily slides into H-Beam channel.
- Hardware included for Wave Dock install.



ITEM #	DESCRIPTION	WEIGHT	INCLUDES
300107	Wave Dock Kayak Rack	59 lbs.	2



FLOATING DOCK LADDER

Convenient exit and entrance into the water. Large steps and handles to easily step out of water onto dock.

- Folds up and locks for easy storage when not in use
- Simple H-Beam channel installation.
- Hardware included for Wave Dock install only.

ITEM #	DESCRIPTION	WEIGHT	INCLUDES
300081	Floating Dock Ladder	45 lbs.	1

GARBAGE CAN/COOLER

Garbage storage close to the action or use as a beverage cooler. Includes an inner liner for convenient emptying. Hinged lid protects from wind & sun.

- Lightweight, easy to handle & will not crack or fade.
- Includes T-plate for simple H-Beam channel installation.
- Molded-in mounting space, installs on side of any structure.
- Hardware included.



ITEM #	DESCRIPTION
301775	Garbage Can/Cooler

FLOWER POT

Bring vibrant greenery & color to your dock, deck or patio with modern styled planters that make a statement in any location.

- Molded-in interior basin for less water maintenance.
- Includes T-plate for simple H-Beam channel installation.
- Molded-in mounting space, easily installs off the side of any structure.
- Hardware included for Wave Dock install only.



ITEM #	DESCRIPTION
301844	Small Flower Pot
301776	Large Flower Pot



DOCK BENCH

Our outdoor benches offer a versatile, maintenance-free seat for your dock, deck or patio without compromising your comfort for looks. Durable Rotomolded construction stands up to weather, time and use without fading, warping, cracking or peeling!

- Maintenance free.
- Optional bolt-on bench box for extra storage.
- Can be installed off set for saving valuable dock space.
- Molded-in cup holders.

ITEM #	DESCRIPTION	INCLUDES
301092	5' Dock Bench	1



BENCH ATTACHMENT SYSTEM

Mounts over water freeing up valuable dock space.

- H-Beam channel installation.



ITEM #	DESCRIPTION	INCLUDES
300963	Dock Bench Attachment System	2





UMBRELLA MOUNT *New*

Add the umbrella of your choice to the dock with our aluminum Umbrella Mount.

- Aluminum construction.
- Adjustable recessed hardware slots.
- Hardware included for Wave Armor Dock install only.
- Requires additional drilling for your specific umbrella "leg" size.
- 11" W X 24" L X 0.37" H

ITEM #	DESCRIPTION	INCLUDES
302061	Umbrella Mount	1



PERGOLA PLATE MOUNT *New*

The Universal Pergola Plate kit allows you to mount an outdoor structure such as a gazebo or pergola onto the Wave Armor Dock surface or any suitable surface.

- Aluminum construction.
- Includes 4 aluminum plates 12" X 8".
- Hardware included Wave Armor Dock install only.
- Requires additional drilling for your specific pergola legs size.

ITEM #	DESCRIPTION	INCLUDES
302057	Pergola Plate Mount	Set of 4 plates

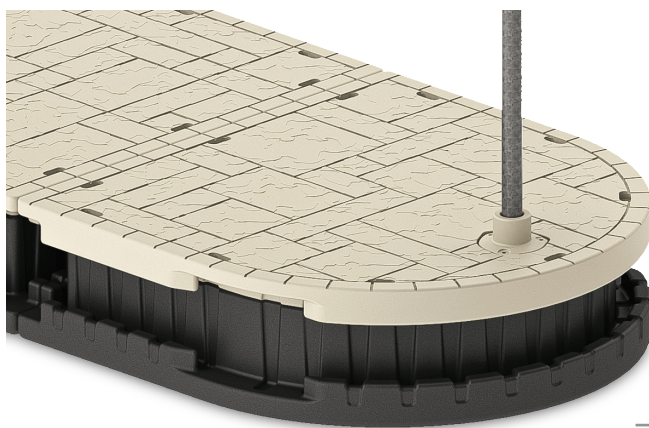
DECORATIVE SNAP-IN PLUGS

Built specifically for the Wave Armor Dock. This Snap-in plug is made to cover unused recessed hardware slots on the docks surface.

- Snap-in design.
- 20 per package.

ITEM #	DESCRIPTION	INCLUDES
301574	Snap-In Plug	20





FLAG POLE SLEEVE *New*

Designed specially to accommodate flag pole, this sleeve has metal plate on the bottom and perfectly fits in to the pipe sleeve opening of the 60" or 40" Half Round Dock End Section, or HD Post Bracket (bracket not included).

- 2-9/16" inner sleeve dimensions.
- Hardware included.



ITEM #	DESCRIPTION
302059	Flag Pole Sleeve

PIPE EXTENSIONS *New*

Designed specifically for adding length to the 2" pipes during water fluctuations. Simply drop into the existing 2" pipe to add on an extra 60" of length.



ITEM #	DESCRIPTION	LENGTH
302282	Pipe Extensions	60"

NOSE CONE 2" *New*

This cast aluminum pipe nose cone fits into a 2" pipe end and prevents mud and rocks from collecting. Simplifying the installation and removing process.



ITEM #	DESCRIPTION	INCLUDES
302074	Nose Cone	2

T-PLATE CONNECTOR

Slides into Wave Dock H-Beam channel system for securing personalized accessories such as railings, flag poles, mooring whips, flower pots and more.

- Hardware included.



ITEM #	DESCRIPTION	INCLUDES
301529	7" T-Plate Connector	2
301504	12" T-Plate Connector	2

10" SIGNATURE WAVE DOCK CLEAT

Designed specifically for Wave Dock this cleat design provides a safer walking surface & secure tie down.

- Mounts directly into insert slots around the perimeter of a Wave Armor dock section.
- Powder coated aluminum construction.
- Hardware included.



ITEM #	DESCRIPTION	INCLUDES
301779	10" Signature Wave Dock Cleat	2

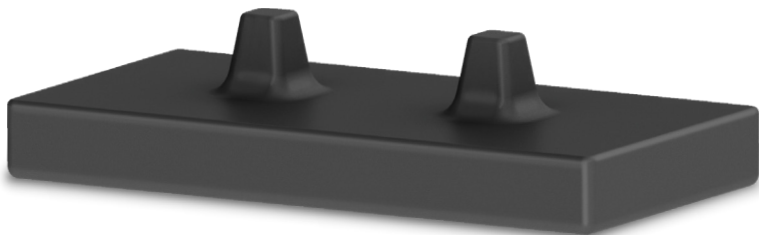




LOW PROFILE BUOYANCY BOOSTER *New*

This low profile dock float is designed to compensate and balance buoyancy deficiency caused by a heavy gangway or ramp. Provides extra 350 lbs. of buoyancy per float to a Wave Dock system. Recommended to be pre-assembled for installation.

- Common areas are under heavy gangways & ramps.
- No hardware needed for installation.



ITEM #	DESCRIPTION	INCLUDES
302066	Low Profile Buoyancy Booster	1

ADDITIONAL DOCK FLOAT

Provides extra 150 lb per float buoyancy to a Wave Dock system.

- Common areas are under kayak racks & dock benches.
- Includes 2 - dock floats and 4 - 7" T-plates and hardware.



ITEM #	DESCRIPTION	INCLUDES
301120	Dock Float	2





BENCHES

Our contemporary design with Rotomolded construction for weather resistance will complement not only a dock but any patio or deck. The 5-foot bench is recommended for the Wave Dock System, all sizes are free standing for residential use.

- Convenient, molded-in beverage holders.
- Molded-in anchoring bolt slots.

ITEM #	DESCRIPTION	SIZE
300014	4' Dock Bench	52"W x 37"H x 27"D
301092	5' Dock Bench	64"W x 37"H x 27"D
300016	6' Dock Bench	76"W x 37"H x 27"D



BENCH BOX

Add on convenient lockable storage for life jackets, and other gear with our bench box. Dock Bench Box attaches onto the 5 ft (301092) bench back for storage space.

- Lockable for convenience.

ITEM #	DESCRIPTION	SIZE
301093	Bench Box	48"L x 15"W x 15"D



LOCKABLE DOCK BOX

Multi usage lockable dock box can be placed on the dock or any other outdoor areas.

- Rotomolded weatherproof construction protects boxes content.

ITEM #	DESCRIPTION	SIZE
300019	Lockable Dock Box	31.25"L x 15.5"W x 15"D



300109

KAYAK/SWIM MAT RACK

Convenient way to store your kayaks, paddle boards, and swim mats close to the action. Ergonomic, space saving design with molded-in tie down and several mounting options for installation. Universal Dock Kayak Rack compatible with majority of dock types and can be mounted to base board or treated lumber.

- The Wave Dock Kayak Rack comes with molded-in H-Beam & hardware.
- Universal Kayak Rack do not includes hardware.
- Molded-in loops for tie down.

ITEM #	DESCRIPTION	INCLUDES
300109	Universal Dock Kayak Rack	2
300107	Wave Dock Kayak Rack	2





SMART STEP KIT

Easy-in-easy-out! Don't let the height of your boat turn boarding into complicated process! The stackable Smart Step system allows for multiple steps to be added on to accommodate the height of any boat.

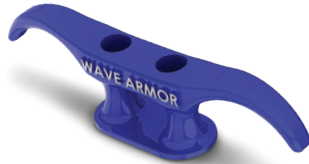
- Mounts over dock anchoring pipe.

ITEM #	DESCRIPTION	INCLUDES
301809	Smart Step Kit	2 Steps & Mounting Plate
301645	Smart Step	1 Step

UNIVERSAL DOCK CLEAT

Wave Armor's signature design provides a safer walking surface & secure tie down. This universal model will work with any kind of dock surface.

- Hardware not included.



ITEM #	DESCRIPTION	INCLUDES
302062	Universal Dock Cleat Kit	2
301778	Universal Dock Cleat Single	1

DOCK WHEEL LOCKING COLLARS



Slides over any 1-1/2" axle/pipe.

ITEM #	DESCRIPTION	INCLUDES
300085	Dock Wheel Locking Collar	2



DOCK WHEELS

Wave Armor Dock Wheels are perfect for roll-in docks, boat lifts, etc. Built to last, our Rotomolded dock wheels are available in 4 sizes. Pre-drilled to avoid extra flotation after submerging in to the water.

ITEM #	DESCRIPTION	INCLUDES	SIZE
300966	Pre-drilled	1	8" H
300967	Pre-drilled	1	12" H
300968	Pre-drilled	1	18" H
300447	Pre-drilled	1	24" H





**Wave
Armor**

PRO PORT

Extremely durable
Rotomolded shell

Molded-in bow stop
with rubber overlay

100% filled with marine
grade EPS foam

High density premium
polyethylene material
with UV protection
package.



Quick clip & stainless steel
chain

Variety of mounting options

12 wheels with various softness & widths

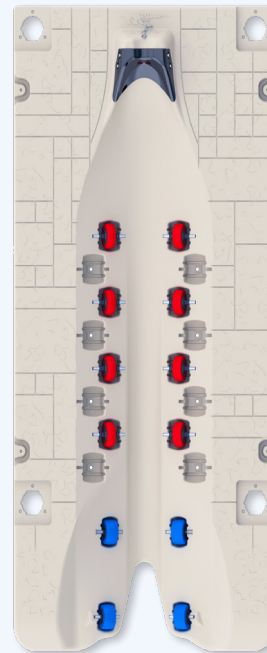


WAVE ARMOR ONCE AGAIN SETS A NEW GOLD STANDARD FOR THE FLOATING DRIVE-ON PORT MARKET!

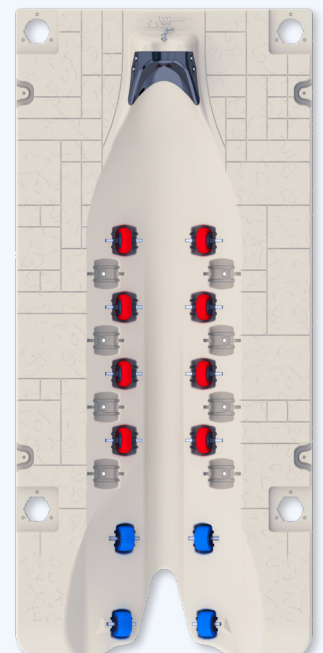
This all new PRO PORT series is a perfect combination of the compact SLX series with all the upgrades of the Apex models, plus new features!

PRO series ports are featuring a new gradual entrance and a deeper midsection of the port for unmatched drive on/off performance and perfect fit for the PWC with the deeper hull design.

- Gradual, entrance enhances the loading and launching performance.
- Deeper midsection design to accommodate PWCs with deeper hulls.
- Newly designed wheel pockets allow for precise alignment.
- 12 wheels with various softness and diameters are strategically positioned for maximum hull protection.
- All new exclusive connectors and attachments.
- Molded-in bow stop with stainless steel clip and chain.

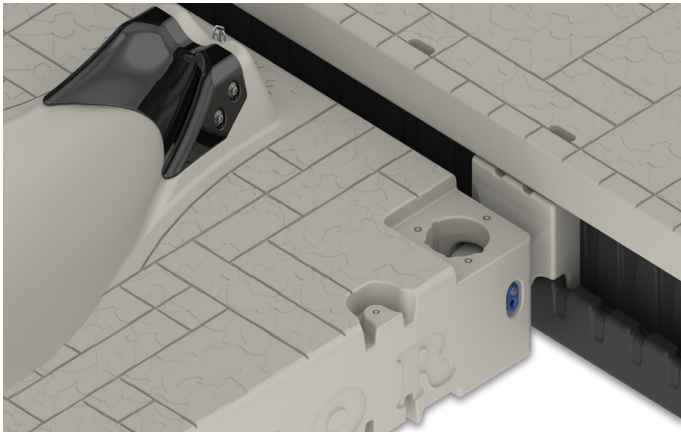


PRO PORT 5
302098



PRO PORT 6
302096

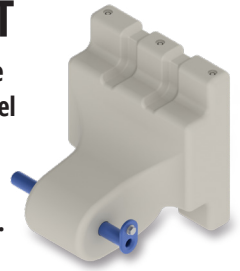
ITEM #	DESCRIPTION	DIMENSIONS	WEIGHT	WEIGHT CAPACITY
302098	PRO Port 5	59" W x 150"L	275 lbs.	1500 lbs.
302096	PRO Port 6	72" W x 150" L	325 lbs.	1800 lbs.



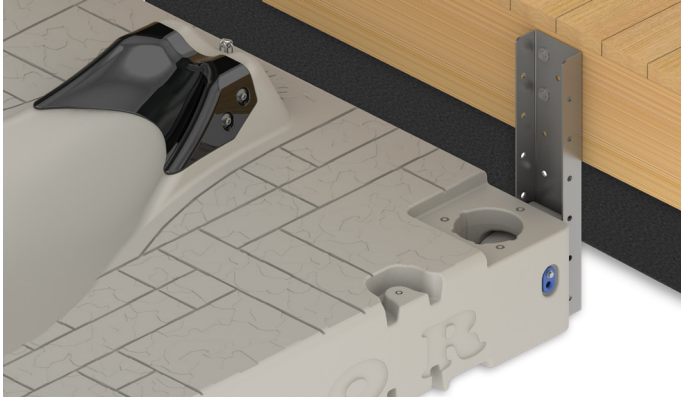
PRO PORT TO WAVE DOCK KIT

Designed specifically for PRO port series, this one piece receiving bracket slides directly into the H-Beam channel of the Wave Armor dock section, making it the easiest and fastest mounting connection on the market.

- Allows for hinged like movement during wave action.
- Hardware included.



ITEM #	DESCRIPTION	INCLUDES
302196	PRO PORT to Wave Dock Kit	2



PRO PORT TO FLOATING DOCK KIT

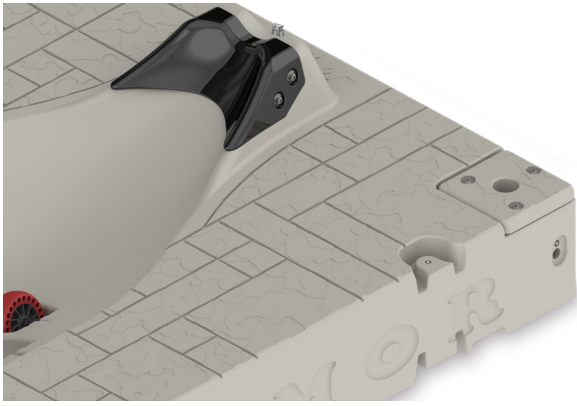
This heavy duty poly bracket designed for PRO port series creating a receiver that attaches to the galvanized C-channel on one side and connected with a pin to the port front mounting pocket. Designed for securing to any floating dock structure.

- Hardware included.



ITEM #	DESCRIPTION	INCLUDES	SIZE
302197	PRO Port to Floating Dock Kit	2	19.75" C-Channels
302198	PRO Port to Floating Dock Kit	2	25.75" C-Channels

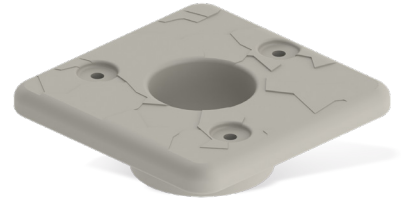




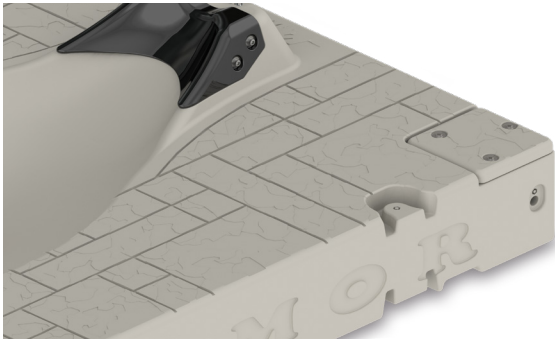
PRO PORT PIPE SLEEVES

Replaceable pipe sleeves accommodate 2", 3" and 4" pipes and are engineered to absorb the everyday wear and tear associated with pipe mount installations. Quick and easy "drop-in" installation utilizing mounting pipe holes in all 4 corners of the PRO port. Secured with stainless steel hardware.

- "Bolt on" design.
- Rigid rotomolded construction.



ITEM #	DESCRIPTION	INCLUDES	SIZE
302128	Pipe Sleeve	2	2" Pipe
302152	Pipe Sleeve	2	3" Pipe
TBD	Pipe Sleeve	2	4" Pipe



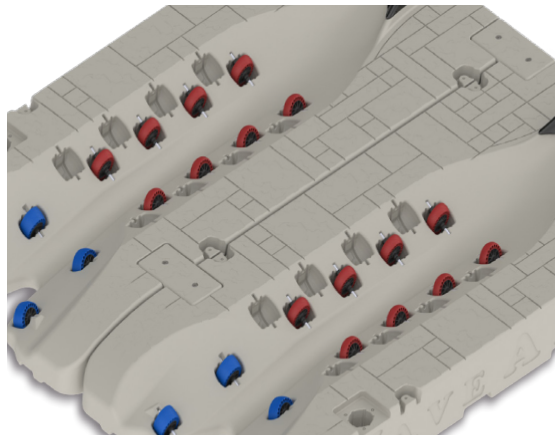
PRO PORT BOLT ON CAP

Cover unused pipe mounting holes with bolt on cap designed specifically for PRO series ports.

- "Bolt-on" design.
- Rigid rotomolded construction.
- Pattern and color matches to the port.



ITEM #	DESCRIPTION	INCLUDES
302151	PRO PORT BOLT ON CAP	2



PORT TO PORT PRO KIT

This 2-piece port to port connector allows to connect side-by-side 2 or more PRO ports, adding more stability and walking surface between the ports. Recommended for multiple port installation such as jet ski rentals, marinas and resorts.

- Improved design for easier installation.
- Rigid rotomolded construction.
- Flagstone pattern and color matches to the port.



ITEM #	DESCRIPTION	INCLUDES
302102	PORT TO PORT PRO KIT	SET OF 2





Wave
Armor

APEX PORTS

Extremely durable
Rotomolded shell

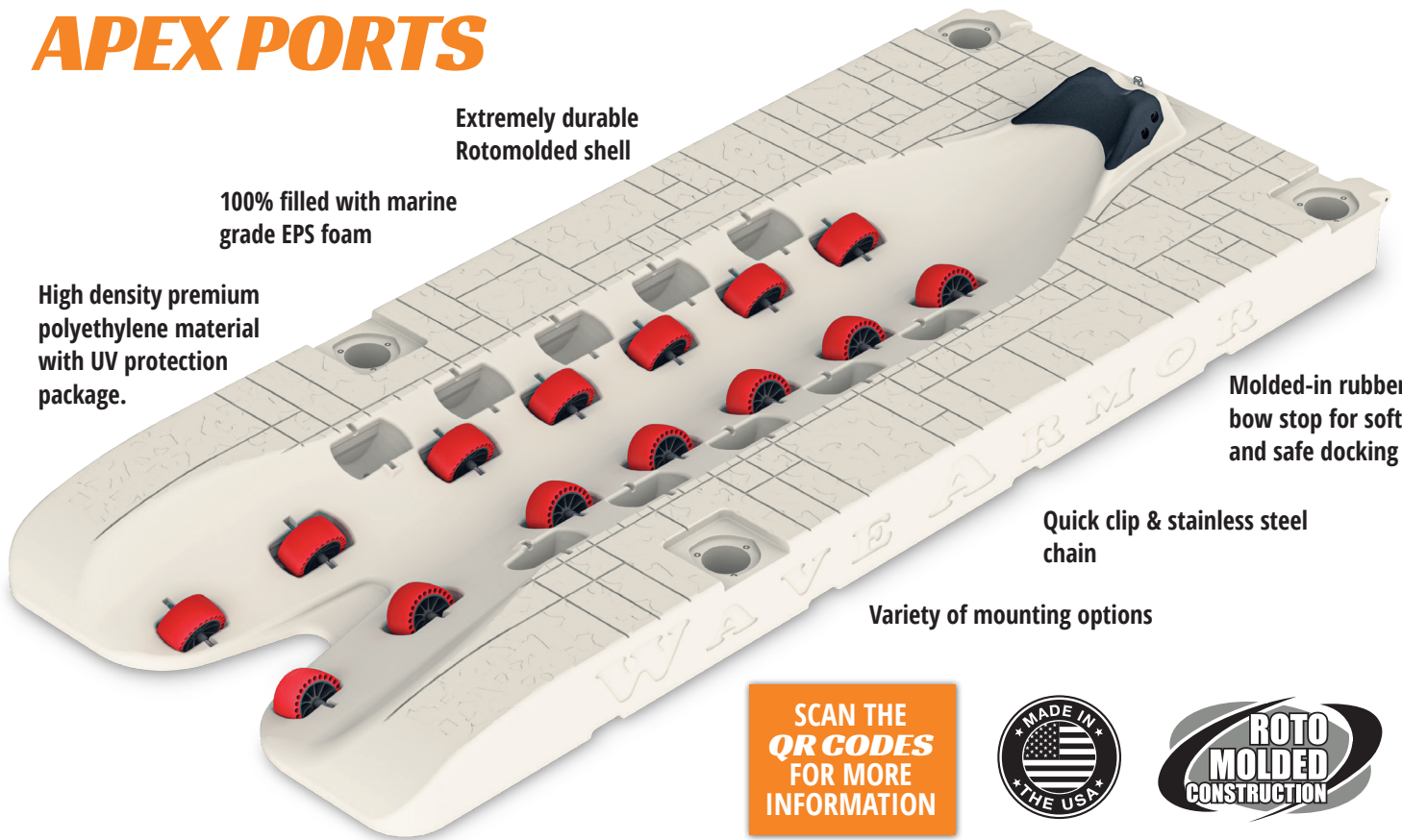
100% filled with marine
grade EPS foam

High density premium
polyethylene material
with UV protection
package.

Molded-in rubber
bow stop for soft
and safe docking

Quick clip & stainless steel
chain

Variety of mounting options



Extra wide adjustable wheel pockets for better
weight distribution and multiple hulls fit.

SCAN THE
QR CODES
FOR MORE
INFORMATION



Experience outstanding performance with our Apex Series!

Our Evolution Series Apex Ports A5 & A6 are the easiest and largest drive on/roll off jet ski ports on the market. Engineered 2 ft longer than SLX, PRO models, these ports are transitional between heavier (3 seater jet ski) and smaller boats.

Apex 6 is build with an additional 12 inches in width for even more room.

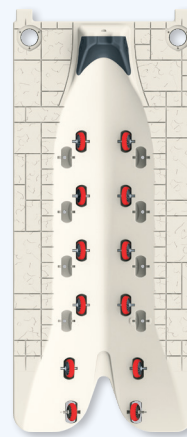
Wheel pockets accommodate 6" and 8" inch wheels to fit multiple hulls styles.

- Molded-in front direct connect mounts. Also, can be side mounted or as a stand alone unit with pipe installation method.
- One set of Snap-in Caps included.

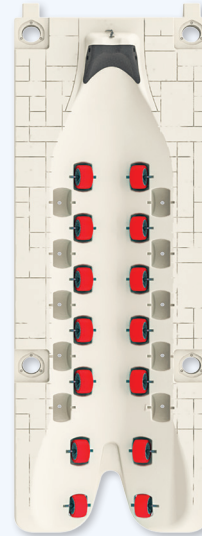
Apex Sport

This port has been designed for lighter jet skis such as Sea Doo Sparks and Yamaha EX Series, or any other lighter jet skis.

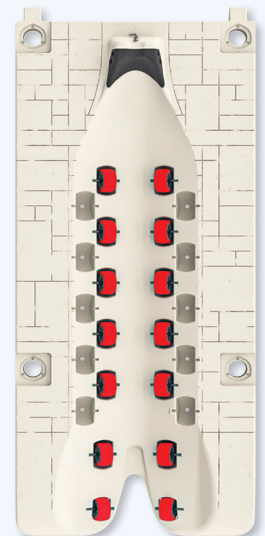
- Easy and quick installation.
- Multiple wheel pockets with adjustable wheels for custom hull fit.
- Buoyancy Boosters are not compatible on the Apex Sport Port.



APEX SPORT
301901



APEX A5
301902



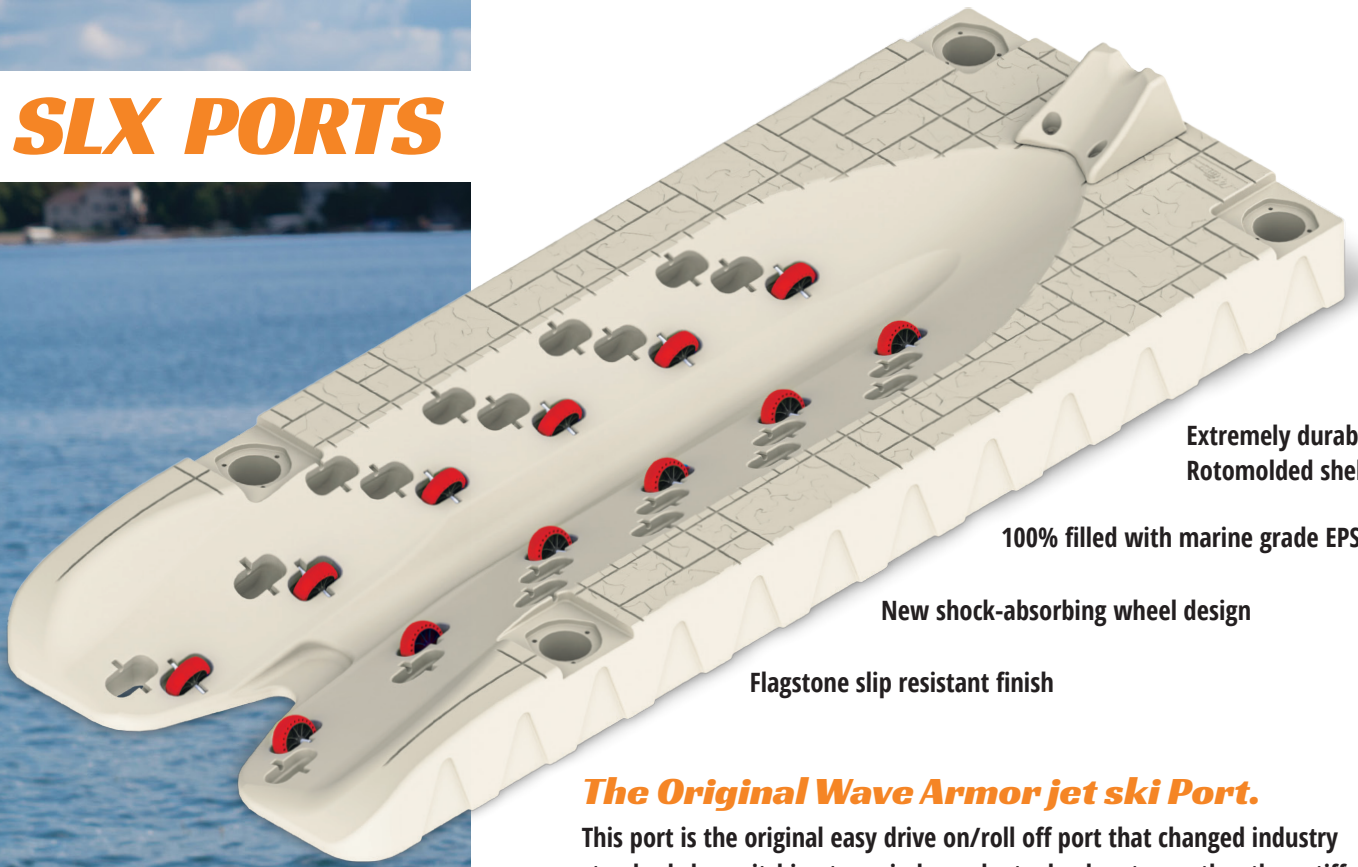
APEX A6
301903

ITEM #	DESCRIPTION	DIMENSIONS	WEIGHT	WEIGHT CAPACITY
301901	Apex Sport	59" W x 132" L	180 lbs.	700 lbs.
301902	Apex A5	59" W x 168" L	300 lbs.	1,700 lbs.
301903	Apex A6	72" W x 168" L	340 lbs.	2,100 lbs.



Wave
Armor

SLX PORTS



Extremely durable
Rotomolded shell

100% filled with marine grade EPS foam

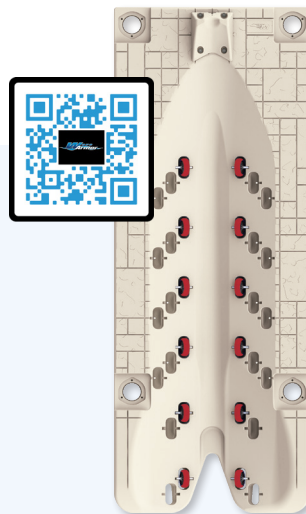
New shock-absorbing wheel design

Flagstone slip resistant finish

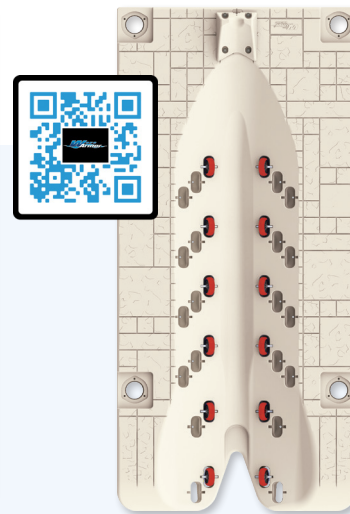
The Original Wave Armor jet ski Port.

This port is the original easy drive on/roll off port that changed industry standards by switching to an independent wheel system rather than stiff roller system. The SLX series ports are still the envy of the industry for their ease of use and versatility.

Available in 5 and 6 ft wide, these ports can be front mounted directly to the Wave Armor Dock (front mounted, side mounted) or as a stand alone unit with the pipe method installation, also can be attached to fixed dock, seawall or other floating structures.



SLX5
301890



SLX6
301891



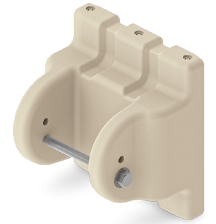
ITEM #	DESCRIPTION	DIMENSIONS	WEIGHT	WEIGHT CAPACITY
301890	SLX5™ Wave Port	59" W x 152" L	286 lbs.	1,500 lbs.
301891	SLX6™ Wave Port	72" W x 152" L	321 lbs.	1,800 lbs.



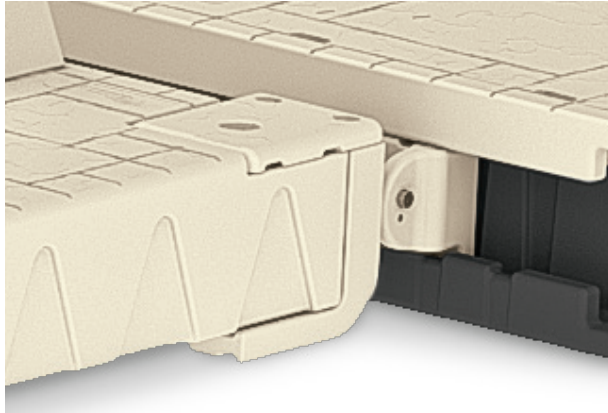
APEX TO WAVE DOCK KIT

This one piece receiving bracket slides directly into the H-Beam channel of a Wave Armor dock section, making it the easiest and fastest mounting connection on the market.

- Allows for hinged like movement during wave action
- Hardware included.



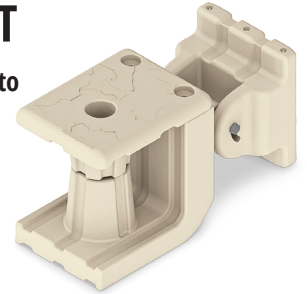
ITEM #	DESCRIPTION	INCLUDES
301347	APEX A5/A6 & APEX SPORT to Wave Dock Kit	2



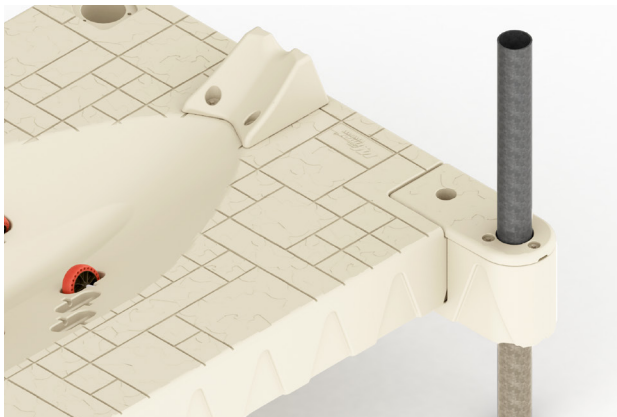
SLX™ PORT TO WAVE DOCK KIT

A combination of 2 heavy duty poly brackets attached to receiving bracket that slides in to the H-Beam channel for simple installation.

- Compatible with SLX5, 6 and Apex A5, A6
- Hardware included.



ITEM #	DESCRIPTION	INCLUDES
301915	SLX™ Port to Wave Dock Kit	2



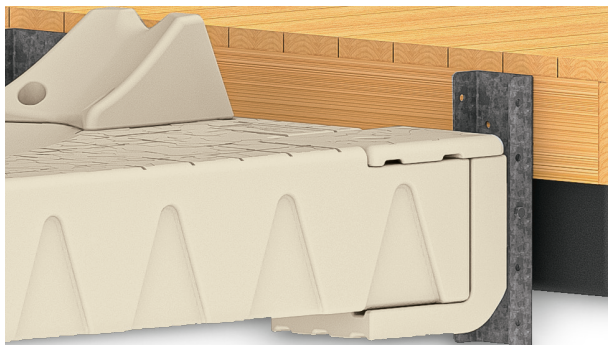
SLX™ POST EXTENSION KIT

The SLX Post Extension Kit mounts directly inside the mounting pockets of SLX5, 6 and Apex A5, A6. Extends the outside edge of the port, increasing the distance between two posts allowing more room for larger PWC when using pipe installation type.

- Compatible with SLX5, 6 and Apex A5, A6.
- Hardware included.



ITEM #	DESCRIPTION	INCLUDES	SIZE
300095	SLX™ Post Extension Kit	2	2" Pipe
300096	SLX™ Post Extension Kit	2	2" Pipe



SLX™ PORT TO FLOATING DOCK KIT

Two heavy duty poly brackets connect together, creating a receiver that attaches to the galvanized c-channel for securing to any floating dock structure.

- Hardware required for mounting to the structure is not included.



ITEM #	DESCRIPTION	INCLUDES	SIZE
301308	SLX™ Port to Floating Dock Kit	2	19.75" C-Channels
301309	SLX™ Port to Floating Dock Kit	2	25.75" C-Channels

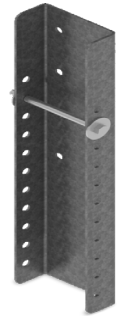




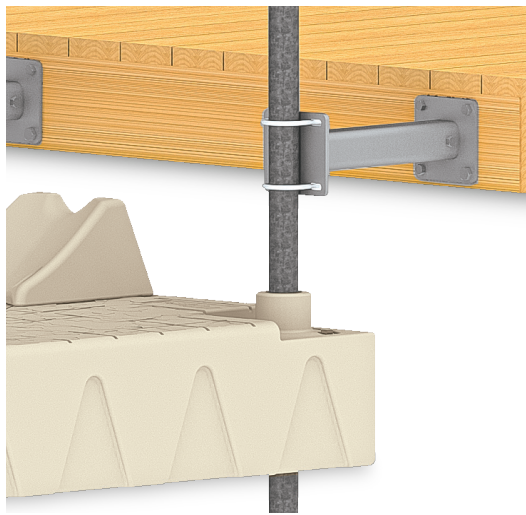
APEX TO FLOATING DOCK KIT

This universal galvanized C-Channel connection bracket provides an easy mount to other floating docks or floating structures.

- For Apex series does not requires any additional brackets.
- Hardware required for mounting to the structure is not included.



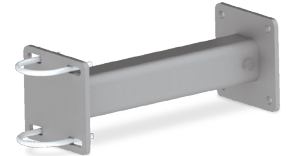
ITEM #	DESCRIPTION	INCLUDES	SIZE
301360	APEX A5/A6 & APEX SPORT to Floating Dock Kit	2	25.75" C-Channels



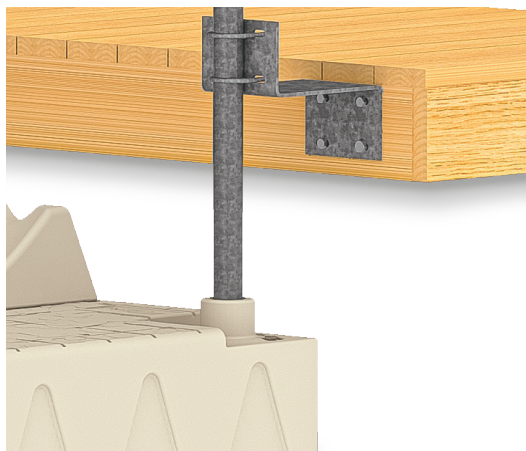
TELESCOPING PORT TO FIXED DOCK KIT OR SEA WALL

Fastened to fixed docks the telescoping bracket adjusts horizontally 8" - 12" and 16" - 24" inches allowing space between dock and port. Pipes secure to these brackets with U-bolts and feed through poly sleeves allowing the port to move freely in fluctuating water levels.

- Includes 2-adjustable aluminum brackets, 2 U-bolts and hardware.
- Requires 2" or 4" pipe sleeves, sold separately.



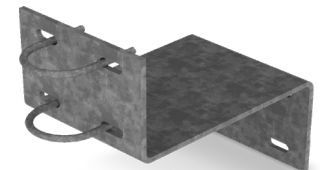
ITEM #	DESCRIPTION	INCLUDES	SIZE
301434	Telescoping Port to Fixed Dock Kit 16"- 24"	2	2" Pipe
301435	Telescoping Port to Fixed Dock Kit 16"- 24"	2	4" Pipe
301883	Telescoping Port to Fixed Dock Kit 8"- 12"	2	2" Pipe
301884	Telescoping Port to Fixed Dock Kit 8"- 12"	2	4" Pipe



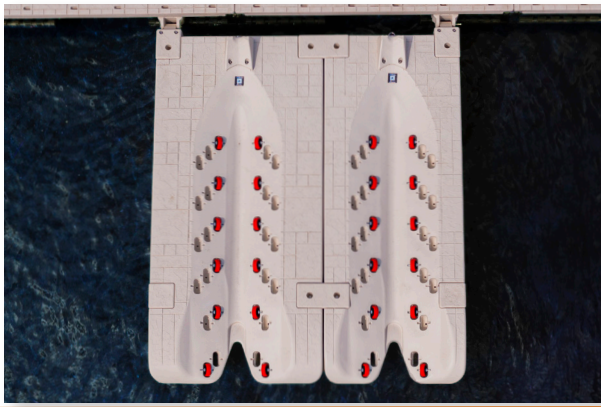
PORT TO FIXED DOCK KIT

Galvanized steel z-bracket with u-bolt secures port to a fixed dock or sea wall allowing for free movement in fluctuating waters.

- Requires 2" or 4" pipe sleeves, sold separately.



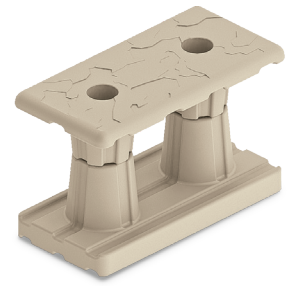
ITEM #	DESCRIPTION	INCLUDES	SIZE
301281	Z- bracket Port to Fixed Dock Kit	2	2" Pipe
301282	Z- bracket Port to Fixed Dock Kit	2	4" Pipe



PORT TO PORT CONNECTOR

Used to connect two or more ports together for added stability and walking space between ports.

- Works with SLX5, 6; Apex A5, A6 ports.
- Recommended for marina and jet ski rental applications.



ITEM #	INCLUDES
300046	Set of 2

APEX SPORT BOLT-IN CAP

Built specifically for Apex Sport port. This Bolt-in Cap plug is used to cover unused front mounting pockets.

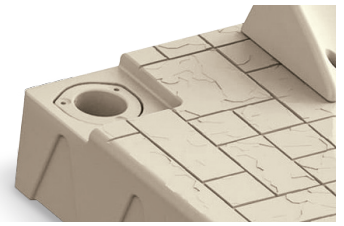
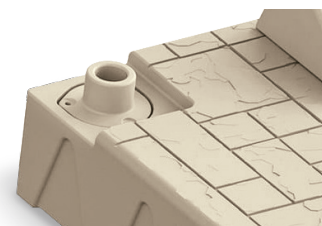
- Hardware included.



ITEM #	DESCRIPTION	INCLUDES
301514	Bolt-in Cap	2

PIPE SLEEVES

Replaceable pipe sleeves accommodate 2" and 3" pipes and are engineered to absorb the everyday wear and tear associated with pipe mount installations.

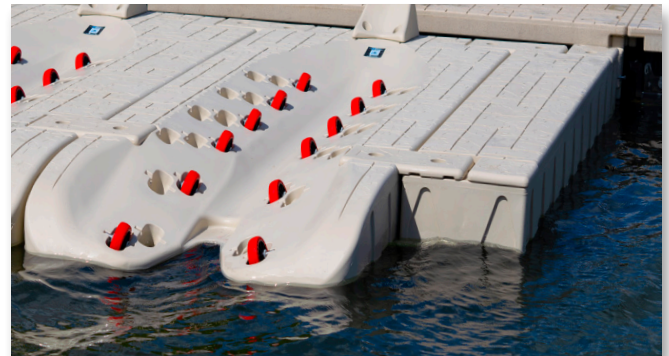
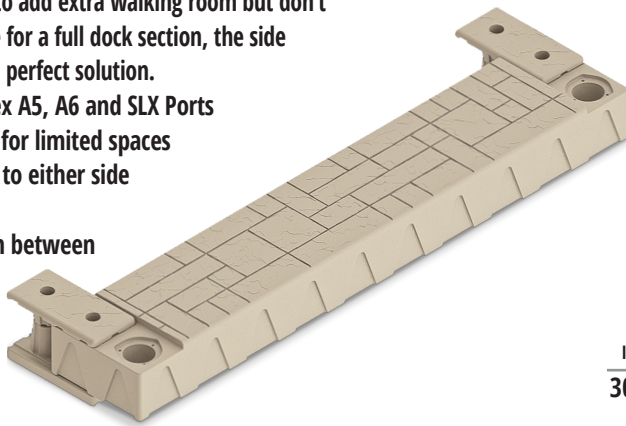


ITEM #	DESCRIPTION	INCLUDES	SIZE
300103	Pipe Sleeve - Raised	2	2" Pipe
301011	Pipe Sleeve - Flush	2	3" Pipe
300041	Pipe Sleeve - Flush	2	4" Pipe

SIDE EXTENSION KIT

If you are looking to add extra walking room but don't have enough space for a full dock section, the side extension kit is the perfect solution.

- Works with Apex A5, A6 and SLX Ports
- The best choice for limited spaces
- Adds 22" width to either side of the port
- Utilizes the or in between unused mounting pockets



ITEM #	DESCRIPTION	INCLUDES	SIZE	WEIGHT
300115	Side Extension Kit	1	22"	132 lbs.



SNAP-IN CAP

Covers unused mounting pockets

- Fits: Apex A5/A6, SLX 5/6

ITEM #	INCLUDES
300116	2



CLIP & CHAIN

Our stainless steel Clip & Chain provides secure connection of your jet ski to the port, allows a padlock use.

- comes standard on Apex A5/A6, PRO ports 5/6

ITEM #	INCLUDES
301269	1





The Genesis takes it all to the next level.

It's another step above existing boat ports in the boat docking industry!

Engineered like no other, the Genesis port's 2 piece design allows for freedom of movement for the (entrance) tail section in combination with a new extra wide shock absorbing wheel which dramatically changes the docking experience. Self-Articulating section design provides better assistance during on/off loading process.



**Wave
Armor**

GENESIS G16, G20 PORTS



Tie down cleat
301874

Molded in slots for cleats
2 sets on each section &
1 on the front

**NO ELECTRICITY, NO PUMPS,
NO HYDRAULICS, NO HASSLE!**

100% filled with marine grade EPS foam

Extremely durable Rotomolded shell

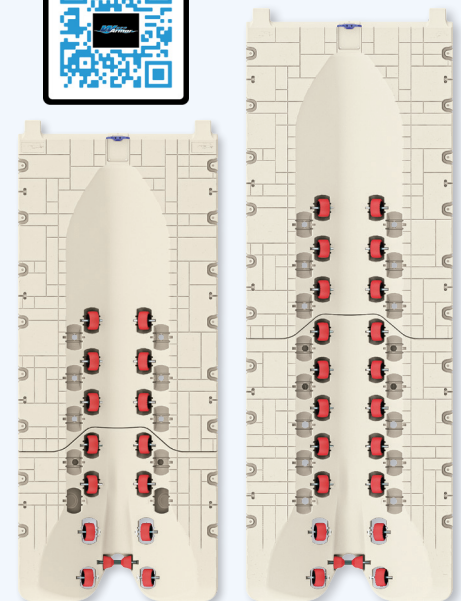
Maintenance free high density polyethylene

Aluminum attachment pins and
Stainless Steel hardware

In the pursuit of perfection and innovation,
Wave Armor created **Genesis**.

Created for boats between 1,500 and 3,600 lbs, the Genesis port can expand weight capacity up to 900 lbs utilizing buoyancy boosters that can be located in multiple locations (more info on pg 46). Engineered with molded-in large wheel pockets accommodating 6" and 8" wheels and guided entrance roller for loading on assistance.

Comes in 2 sizes (16ft and 20ft) for different length boats. Interchangeable accessories and attachment kits with mounting options available for every fixed or floating dock application makes it the best choice for hassle free boat docking.



G16
301828

G20
301832

ITEM #	DESCRIPTION	DIMENSIONS	WEIGHT	WEIGHT CAPACITY
301828	G16	84" W x 192" L x 14" Tall	600 lbs.	2,600 lbs.
301832	G20	84" W x 240" L x 14" Tall	700 lbs.	3,600 lbs.

Welcome to hassle free boat docking!

Results of years of engineering and testing – Extreme X24 is the best Drive On/Drive Off boat port that once again sets a new standard in the boat docking industry. Designed to accommodate a wide range of boats from 23' to 32' ft long and up to 8,000 lbs of weight capacity.

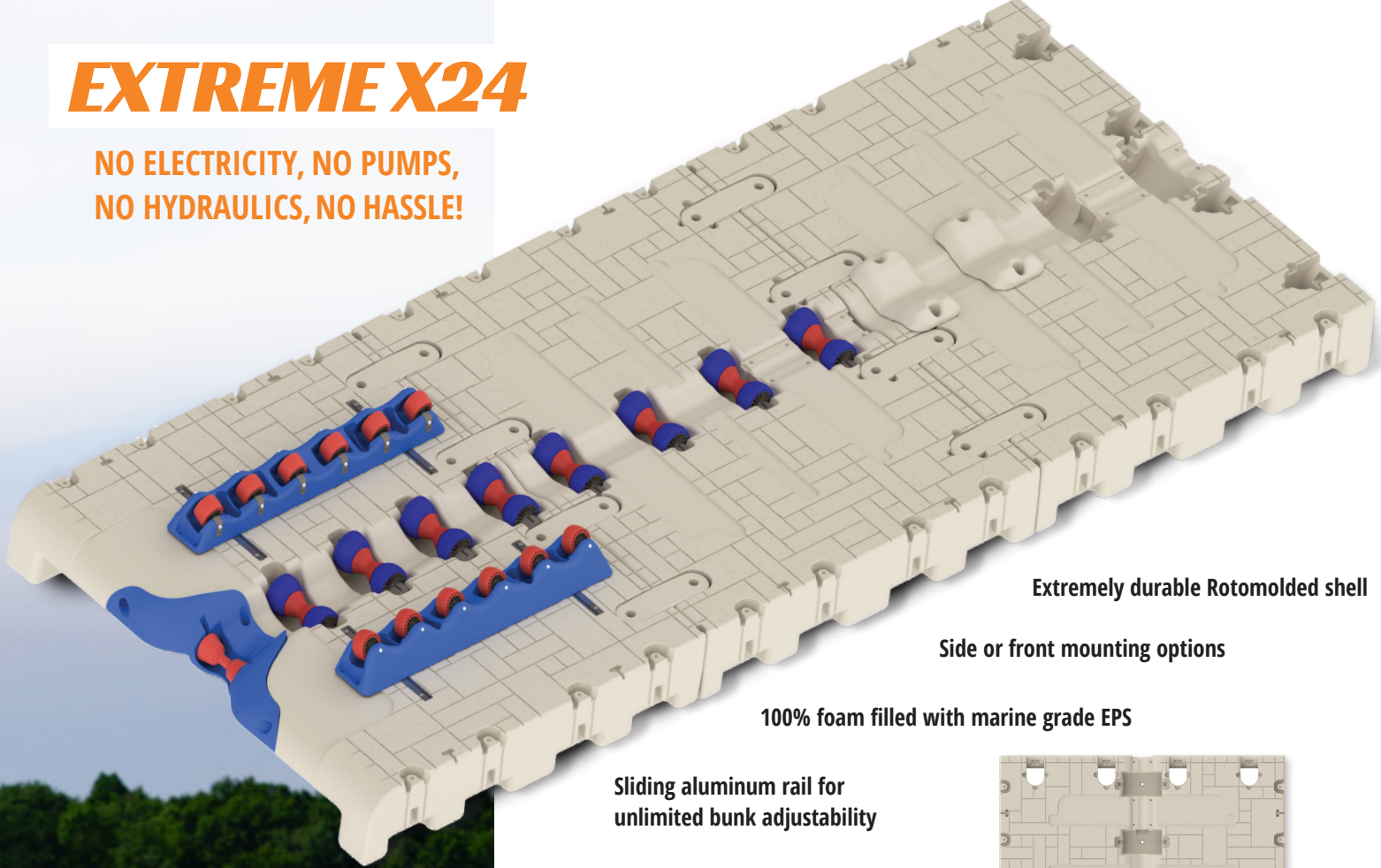
More buoyancy may be added to the entrance section up to 1,200 lbs, depending on your motor package.



**Wave
Armor**

EXTREME X24

**NO ELECTRICITY, NO PUMPS,
NO HYDRAULICS, NO HASSLE!**



Extremely durable Rotomolded shell

Side or front mounting options

100% foam filled with marine grade EPS

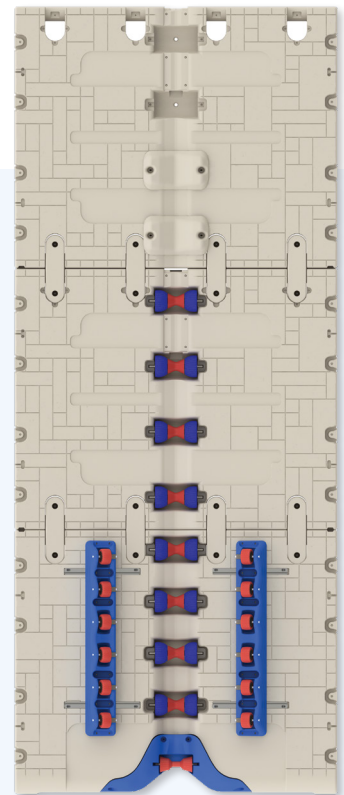
Sliding aluminum rail for unlimited bunk adjustability

Extreme X24

This port features 2 styles of adjustable bunks and a new shock absorbing roller system to provide unmatched docking performance. Additional loading support provided by entrance roller to insure comfortable docking. Highly customizable bunk design allows for a large variety of boat styles, including fishing boats, skiffs, jet, jon and bay boats.

Comes standard with the new in-line roller bunk and new 3.5" x 6" wheels (optional 4" x 8" wheel also available).

Multiple mounting options available for any fixed or floating dock. More information on page 45-48.



EX24
301980



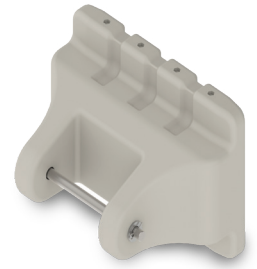
ITEM #	DESCRIPTION	SECTIONS	DIMENSIONS	WEIGHT	WEIGHT CAPACITY
301979	Extreme X24 Boat Port	2	120" W x 192" L	725 lbs.	5,200 lbs.
301980	Extreme X24 Boat Port	3	120" W x 288" L	1,500 lbs.	8,000 lbs.



GENESIS BOAT PORTS TO WAVE DOCK KIT

This heavy duty kit allows you to connect a boat port to a Wave Dock fast and easy with our direct connect H-Beam channel system. This hinged connection system allows movement during wave action.

- Hardware included.



ITEM #	DESCRIPTION	INCLUDES
301858	Genesis to Wave Dock Kit	2



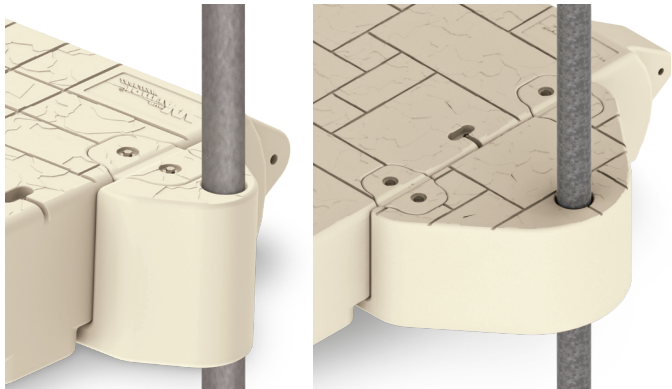
GENESIS TO FLOATING DOCK KIT

This universal c-channel bracket connects boat port to any floating dock or structure simple and fast.

- Additional hardware for your specific floating structure not included.



ITEM #	DESCRIPTION	INCLUDES	SIZE
301857	Genesis to Floating Dock Kit	2	25.75" C-Channels



2" PIPE ATTACHMENT KIT

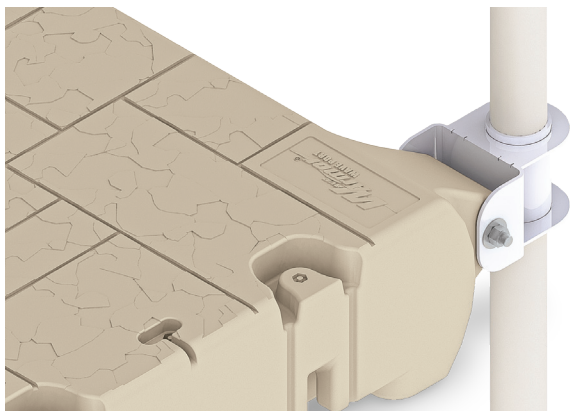
This brackets allow the boat port to be free standing and self adjust to fluctuating water levels.

- Recommended for calmer waters such as bays or canals.

3" PIPE ATTACHMENT KIT

Heavy duty version of standard post attachment allows the boat port to be free standing and self-adjusting to fluctuating water levels in rougher water conditions.

ITEM #	DESCRIPTION	INCLUDES	SIZE
301859	Genesis/Extreme Post Attachment Kit	2	2" Pipe Mount
301945	Genesis/Extreme Post Attachment Kit	2	3" Pipe Mount



GENESIS 3" FRONT PIPE MOUNT

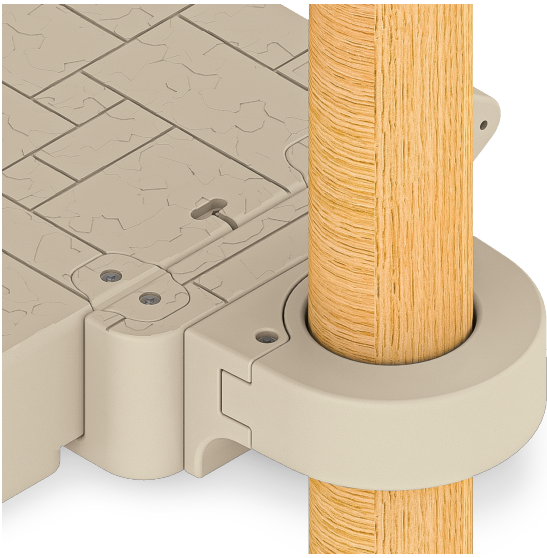
This heavy duty aluminum construction hinge alike mount designed for G16, G20 ports to allow these ports be installed as front mounted stand alone units.

- Recommended to use 3" PWC pipe over 2" galvanized steel pipe for installation.
- Hardware included.



ITEM #	DESCRIPTION	INCLUDES
302068	Genesis/Extreme Front Mount	2





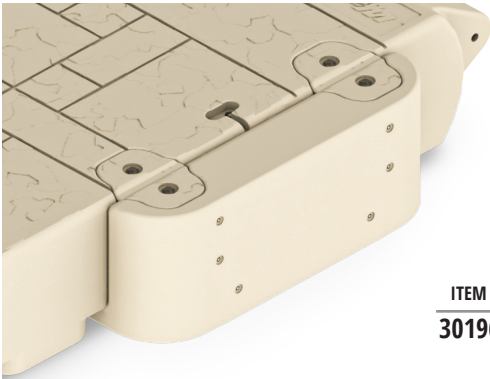
New PYLON HOOP ATTACHMENT KIT

These heavy duty pylon attachment kits are constructed of tough polyethylene, providing a secure connection of the boat port to pylons, and innovative design allows for easy to installation of your boat port with new or existing pylons!

- Can be used for installation with existing pylons.
- Heavy duty oversized build.



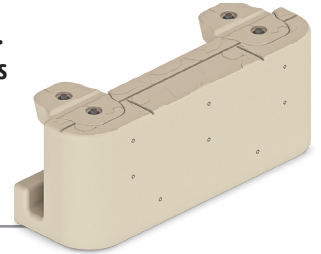
ITEM #	DESCRIPTION	INCLUDES	SIZE
301966	8" Poly Pylon Hoop Attachment Kit	2	Fits an 8-1/2" Pylon
301967	10" Poly Pylon Hoop Attachment Kit	2	Fits an 8-1/2" Pylon
302009	12" Poly Pylon Hoop Attachment Kit	2	Fits an 8-1/2" Pylon



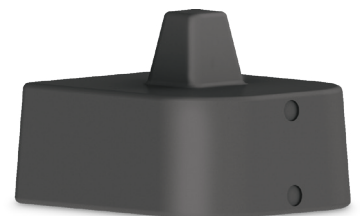
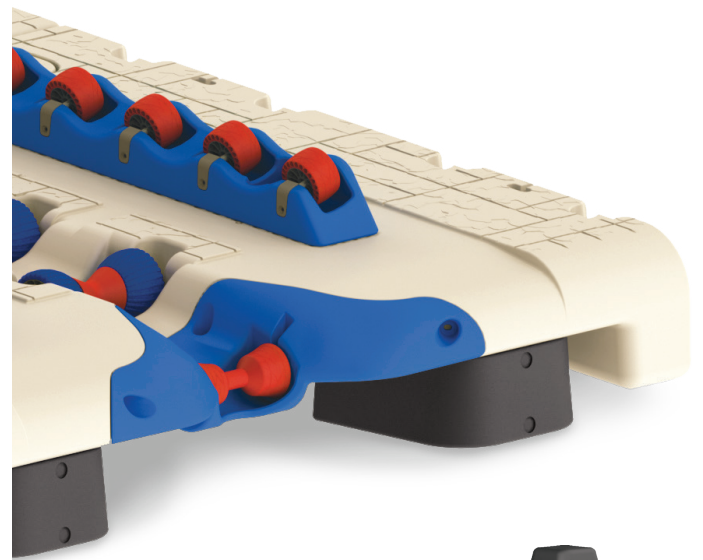
UNIVERSAL SIDE MOUNT PLATE

Alternative to front mounting, this side mount plate is an additional option for securing ports to existing dock or sea wall.

- Used to attached a canopy, pylon hoops and other accessories
- Includes hardware.
- Additional mount for securing to the seawall not included.



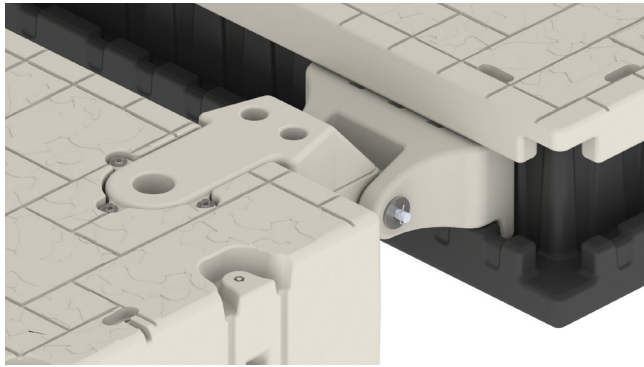
ITEM #	DESCRIPTION	INCLUDES
301964	Universal Side Mounting Plate	2



GENESIS/EXTREME BUOYANCY BOOSTER

Buoyancy boosters expand the port weight capacity is from 300 to 1,200 lbs. Each booster adds 150 lbs of extra buoyancy. Attaches into multiple locations build into ports rear underside to adjust for different motor packages.

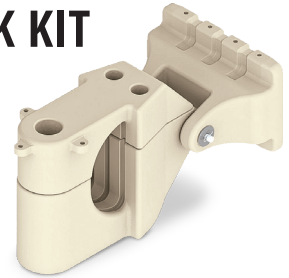
ITEM #	DESCRIPTION	INCLUDES	SIZE
301823	Genesis/Extreme Buoyancy Booster	2	18" x 18" x 12"



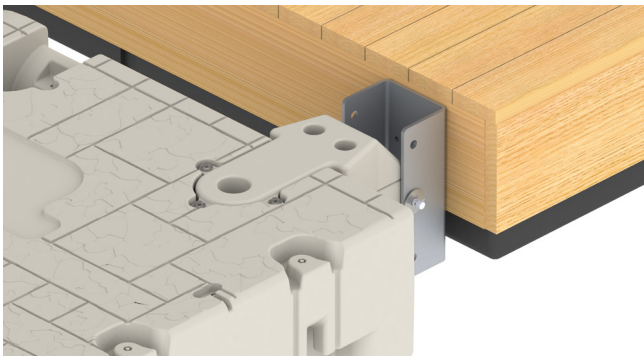
EXTREME X24 TO WAVE DOCK KIT

This heavy duty kit allows you to connect a boat port fast and easy with Wave Armor direct connect H-Beam channel system. This hinged connection system provides movement during wave action.

- Hardware included



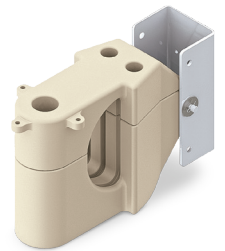
ITEM #	DESCRIPTION	INCLUDES
301346	Extreme X24 to Wave Dock Kit	2



EXTREME X24 TO FLOATING DOCK KIT

Connects the Extreme X24 boat port to any floating dock while keeping the boat port close to the dock.

- Hardware included



ITEM #	DESCRIPTION	INCLUDES
301329	Extreme X24 to Floating Dock Kit	2

EXTREME X24 PIPE SLEEVES

Replaceable pipe sleeves accommodate 2", 3" and 4" pipes and are engineered to absorb the everyday wear and tear associated with pipe mount installations.

- Hardware included.



ITEM #	DESCRIPTION	INCLUDES	SIZE
301746	Extreme X24 2" Pipe Sleeves	2	2" Pipe
301747	Extreme X24 3" Pipe Sleeves	2	3" Pipe
301748	Extreme X24 4" Pipe Sleeves	2	4" Pipe

EXTREME X24 FRONT PLUG KITS

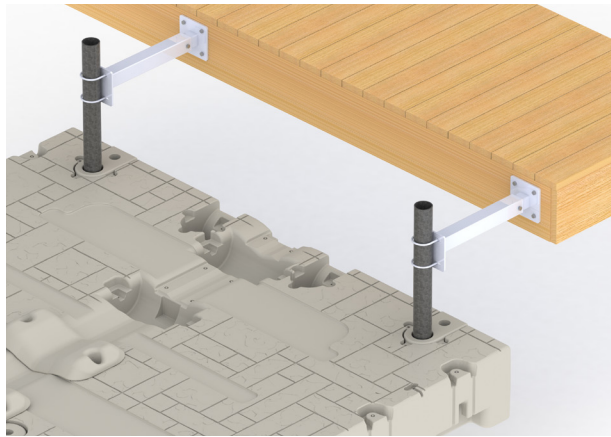
Fill in unused mounting pockets for clean, finished look and a flush walking surface.

- Hardware included.



ITEM #	DESCRIPTION	INCLUDES	SIZE
301749	Extreme X24 Front Plug Kit	2	—

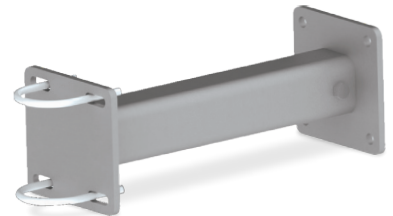




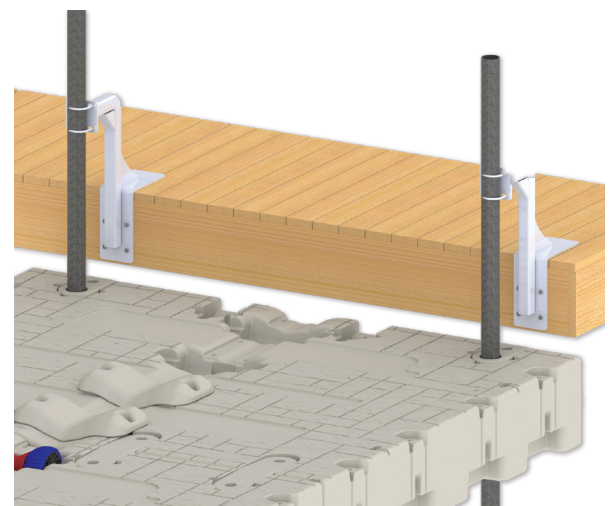
TELESCOPING DOCK KIT PORT TO FIXED OR SEA WALL

Fastened to fixed docks the telescoping bracket adjusts horizontally 8" - 12" and 16" - 24" inches allowing space between dock and port. Pipes secure to these brackets with U-bolts and feed through poly sleeves allowing the port to move freely in fluctuating water levels.

- Includes 2-adjustable aluminum brackets, 2 U-bolts and hardware.
- Requires 2" or 4" pipe sleeves, sold separately.



ITEM #	DESCRIPTION	INCLUDES	SIZE
301434	Telescoping Port to Fixed Dock Kit 16" - 24"	2	2" Pipe
301435	Telescoping Port to Fixed Dock Kit 16" - 24"	2	4" Pipe
301883	Telescoping Port to Fixed Dock Kit 8" - 12"	2	2" Pipe
301884	Telescoping Port to Fixed Dock Kit 8" - 12"	2	4" Pipe



EXTREME X24 RAISED PIPE MOUNT TO FIXED DOCK KIT

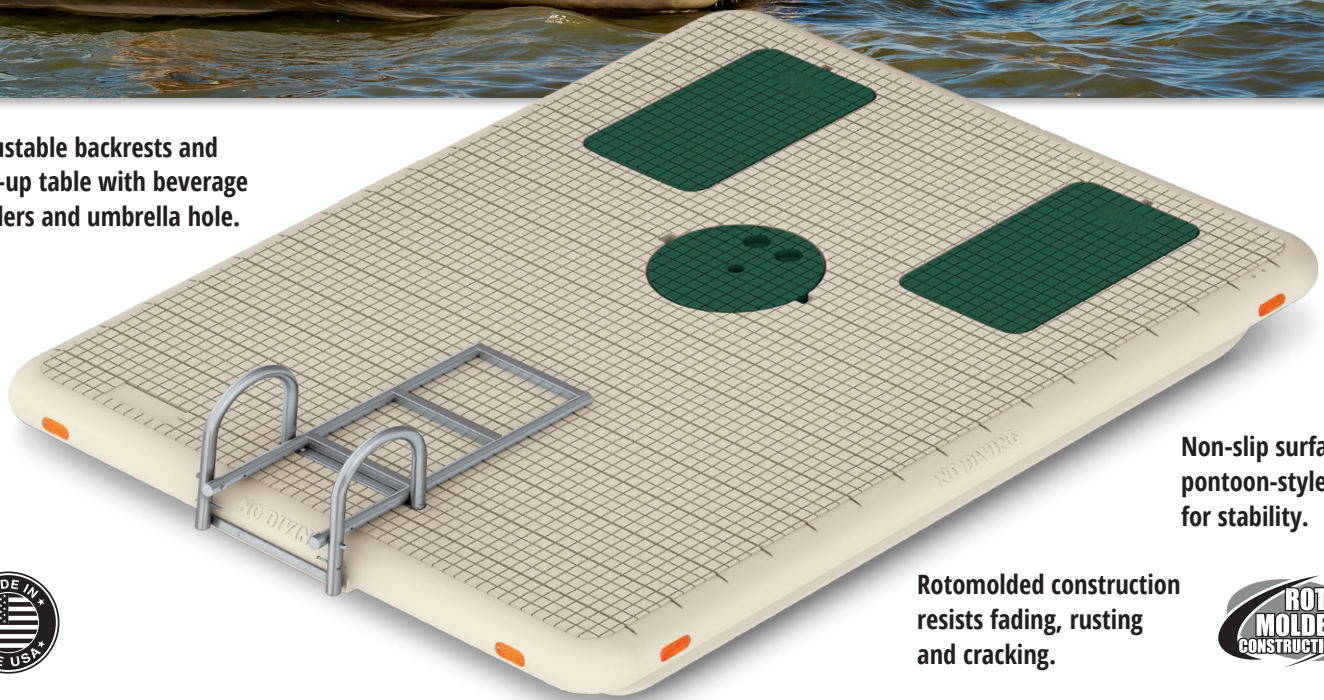
This heavy duty aluminum L-bracket kit allows you to mount the Extreme X24 boat port to a low profile fixed dock (non-floating), yet allows the boat port to rise up and down with the changing water levels.



ITEM #	DESCRIPTION	INCLUDES	SIZE
302037	Extreme X24 Raised Pipe Mount	2	2" Pipe
302081	Extreme X24 Raised Pipe Mount	2	3" Pipe
302082	Extreme X24 Raised Pipe Mount	2	4" Pipe

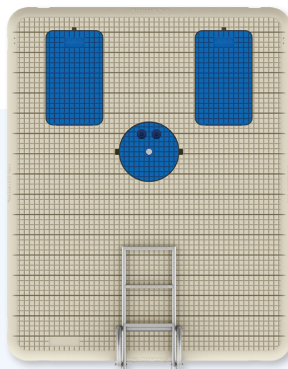


Adjustable backrests and pop-up table with beverage holders and umbrella hole.

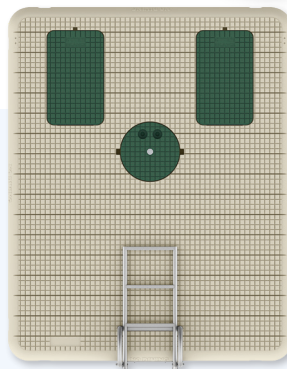


Non-slip surface and pontoon-style bottom for stability.

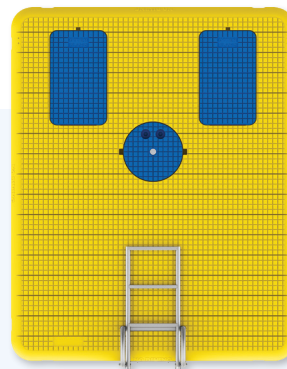
Rotomolded construction resists fading, rusting and cracking.



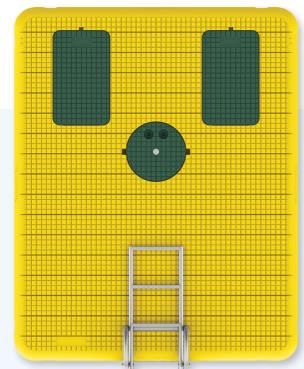
300072



300073



300075



300076

ITEM #	DESCRIPTION	COLOR BODY/SEAT BACK & TABLE	DIMENSIONS	WEIGHT CAPACITY
300072	Otter Island Swim Raft	Tan/Blue	8' W x 10' L	3,000 lbs.
300073	Otter Island Swim Raft	Tan/Green	8' W x 10' L	3,000 lbs.
300075	Otter Island Swim Raft	Yellow/Blue	8' W x 10' L	3,000 lbs.
300076	Otter Island Swim Raft	Yellow/Green	8' W x 10' L	3,000 lbs.





ISLAND PROTECTIVE STORAGE COVER

Wave armor's raft cover protects your island swim raft and ladder during off season storage.

- UV and water-resistant.
- Adjustable buckle clips in all corners.

ITEM #	DESCRIPTION	SIZE
300050	Island Protective Storage Cover	10' L x 8' W



HIGH VISIBILITY RAFT ANCHOR

Wave Armor's high visibility poly raft anchor is a safe, do-it-yourself option to the typical store-bought raft anchor. Simply fill the anchor with sand to create a 140 lb. raft anchor. The anchor's universal design works with any swim raft on the market.

- Rounded top-side with no sharp edges.
- Underside claws to securely hold lake bottom.

ITEM #	DESCRIPTION	COLOR	DIMENSIONS	WEIGHT CAP
300003	Raft Anchor	Yellow	26" Round x 10" Deep	140 lbs.



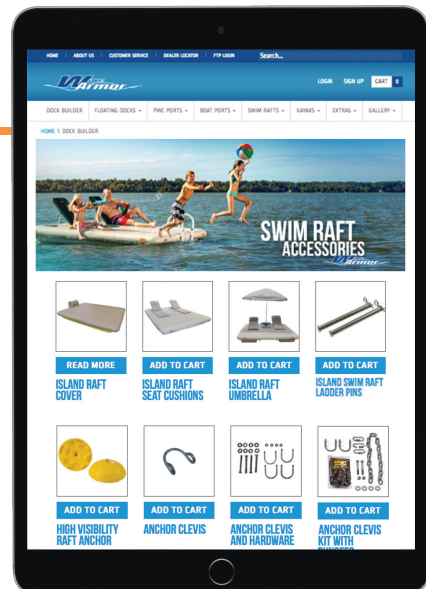
ANCHOR CLEVIS KIT WITH BUNGEEES

All-in-one kit for the attachment of a raft anchor to your swim raft. Also available in a double kit for rough water conditions.

ITEM #	DESCRIPTION
302210	Anchor Clevis Kit with Bungees
302209	Double Anchor Clevis Kit with Bungees



MORE OTTER ISLAND SWIM RAFT ACCESSORIES
AVAILABLE ONLINE VISIT WAVEARMOR.COM





LIVE LIFE BEYOND THE SHORELINE



IMPULSE KAYAK

Features an adjustable neoprene seat cushion, rear compartment with tie-down eyelets, front & back handles, beverage holder and foot rests.



CRUIZER KAYAK

Features molded-in cockpit, rear compartment with tie-down eyelets, side handles, beverage holder and foot rests.



ITEM #	DESCRIPTION	COLOR	OVERALL DIMENSIONS	COCKPIT DIMENSIONS	WEIGHT	WEIGHT CAP
300440	Cruizer Kayak	Blue	8'6"L x 30"W x 15"D	4'L x 23"W x 6"D	36 lbs.	200 lbs.
300441	Cruizer Kayak	Yellow	8'6"L x 30"W x 15"D	4'L x 23"W x 6"D	36 lbs.	200 lbs.
300442	Impulse Kayak	Blue	10'L x 32"W x 10"D	4'L x 23"W x 6"D	42 lbs.	300 lbs.
300443	Impulse Kayak	Yellow	10'L x 32"W x 10"D	4'L x 23"W x 6"D	42 lbs.	300 lbs.



ITEM #	DESCRIPTION	DIMENSIONS	WEIGHT
300089	Kayak Paddle	7'	5 lbs.