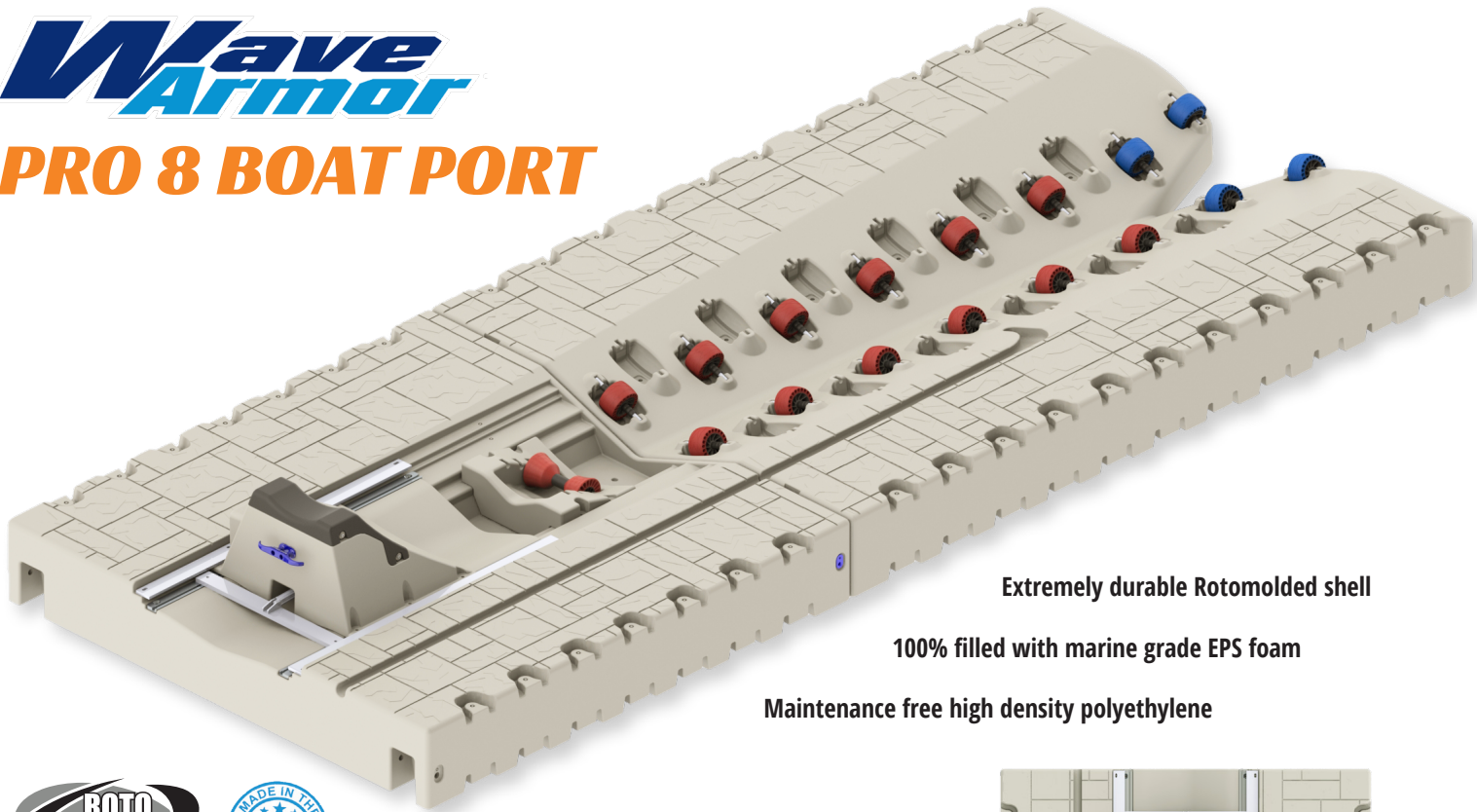




PRO 8 BOAT PORT



Extremely durable Rotomolded shell

100% filled with marine grade EPS foam

Maintenance free high density polyethylene

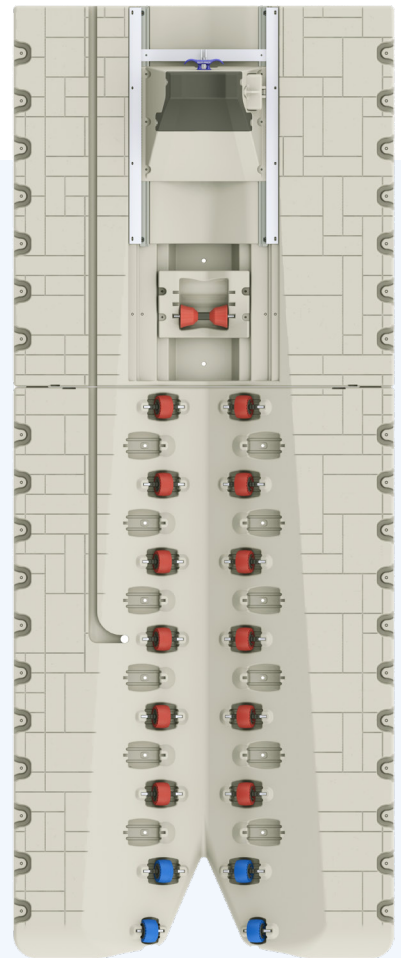


PRO 8 BOAT PORT

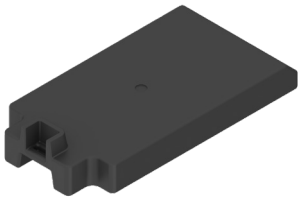
The newest addition to the Wave Armor boat port line!

The Pro 8 Boat Port is engineered to be the most customizable docking system, supporting boats up to 4,200 lbs. Additional side extension decks allow you to expand the width for more walkaround room while increasing the capacity. Features an adjustable bow stop and optional push-arm system. Ideal for jet boats and watercrafts with smaller engines.

- Simple port assembly
- Varied wheel density ensures soft port entrance
- Center front roller adjusts up/down in 3" pockets, raising or lowering the bow as needed
- Side mounting pockets to fit additional Wave Armor accessories
- Big centering V-shape in entrance for easy entrance to port, even if not perfectly centered or at an angle
- Optional 10" side wings for port expansion to increase floatation and/or walking surface
- Bow stop is adjustable by more than 48" and has the ability to be fixed or help push boat remotely into water



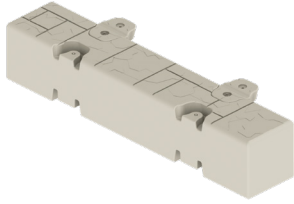
ITEM #	DESCRIPTION	DIMENSIONS	WEIGHT	WEIGHT CAPACITY
302513	PRO 8 Boat Port	8' W x 20' L	850 lbs.	4,200 lbs.



BUOYANCY BOOSTER

Provides an extra 200 lbs. of floatation per booster. The booster can be installed along the perimeter of the port in multiple molded-in underside pockets, even after full port installation is completed. No tools or hardware needed for the installation.

ITEM #	DESCRIPTION	INCLUDES
302159	Buoyancy Booster	2



PRO 8 SIDE WING

This side extension deck allows you to increase the width of the Pro 8 or Pontoon Port.

ITEM #	DESCRIPTION	DIMENSIONS	WEIGHT	WEIGHT CAPACITY
302514	PRO 8 Side Wing	14.6" W x 47.75" L	20 lbs.	140 lbs.

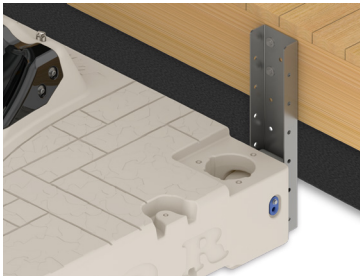
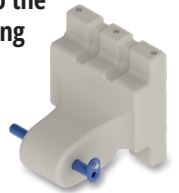


PRO PORT TO WAVE DOCK KIT

Designed specifically for PRO port series, this one piece receiving bracket slides directly into the H-Beam channel of the Wave Armor dock section, making it the easiest and fastest mounting connection on the market. Hardware included.

- Allows for hinged like movement during wave action

ITEM #	DESCRIPTION	INCLUDES
302196	PRO PORT to Wave Dock Kit	2



PRO PORT TO FLOATING DOCK KIT

This heavy duty poly bracket designed for PRO port series creating a receiver that attaches to the galvanized C-Channel on one side and connected with a pin to the port front mounting pocket. Designed for securing to any floating dock structure. Hardware included.

ITEM #	DESCRIPTION	INCLUDES	SIZE
302197	PRO Port to Floating Dock Kit	2	19.75" C-Channels
302198	PRO Port to Floating Dock Kit	2	25.75" C-Channels



PRO 8 PORT FRONT PIPE MOUNT

These front pipe mounts are designed to be used when the slip width is limited or when a parallel installation to an existing dock is required. These front mounts utilize the Pro Port pipe sleeves and are available in 2" and 3" diameters. For additional installation strength, the Z Bracket kits or adjustable fixed dock mounts are the perfect add on. Rotomolded construction.

- Requires pipe sleeves of appropriate size for installation, Hardware provided
- Can be used in combination with other brackets

ITEM #	DESCRIPTION	INCLUDES
302411	2"	2
302412	3"	2



PRO 8 PORT PIPE ANCHORING KIT

This anchoring kit allows the Pontoon Port to be installed as a stand alone unit utilizing pipe mount type of installation or inside of a boat slip without mounting directly to a dock. It can be used to mount the Pontoon Port to the seawall in combination with other brackets. This 2" pipe bracket is designed to attach over any of the molded-in (horseshoe shaped) pockets located along the perimeter of the Pontoon Port. Rotomolded construction. Includes: 2 Brackets, hardware

- 4 pipe mounts are recommended when doing a free-standing installation

ITEM #	DESCRIPTION	INCLUDES
302345	2" Post Attachment Kit	2
302346	3" Post Attachment Kit	2
302347	4" Post Attachment Kit	2