

# Wave Armor

## PRODUCT ASSEMBLY INSTRUCTIONS:

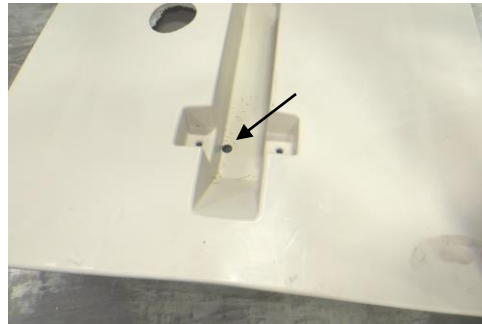


**Item # | Product Name:** #302673 Power Launch Bow Stop Pro 8, Pro 170 and Pro 220

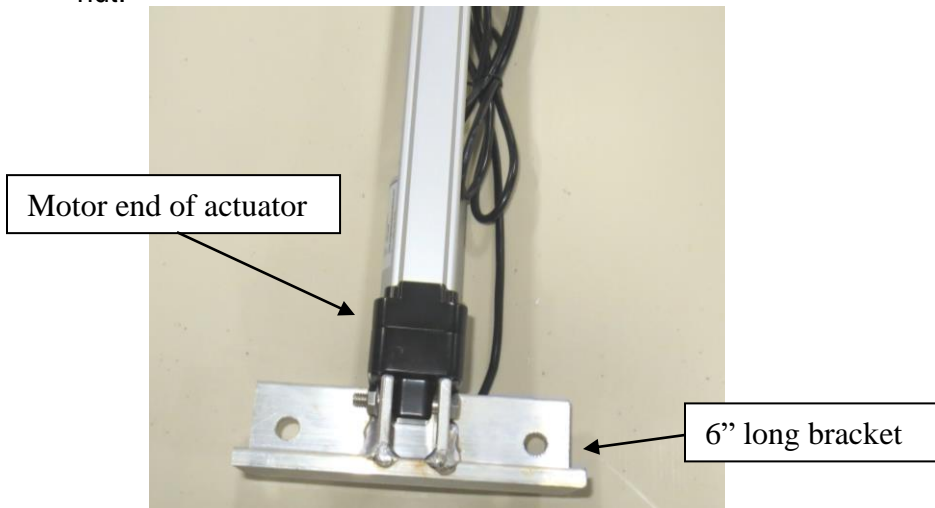
Parts List:	Item #	Tools Needed:
1. Actuator w/24" stroke, 24VDC qty 1	302558	1. Ratchet
2. Control Box qty 1	302561	2. 9/16" socket
3. Voltage converter 12 to 24 volts qty 1	302626	3. 1/2" socket
4. Power launch front connection bar qty 1	302565	4. 1/2" wrench
5. Power launch bracket qty 1	302621	5. Drill
6. Hdwe Bag qty 1 Contains: 3/8 x 1 1/4" bolt qty 2, 3/8" split washer qty 4 3/8" flat washer qty 4, 3/8 x 1" bolt qty 2, 5/16 x 2" bolt qty 2, 5/16" flange nut qty 2	102378	6. 1/2" and 1" bit (the 1" bit may not be needed depending on model)

### Assembly Instructions:

1. Drill a 1" hole in the top corner of the battery box if it is not already there. Also drill a 1" hole in the bottom of the bow stop if it is not already there.



2. Attach the 6" long bracket to the actuator on the motor end using the 5/16 x 2" bolt and the 5/16" flange nut.



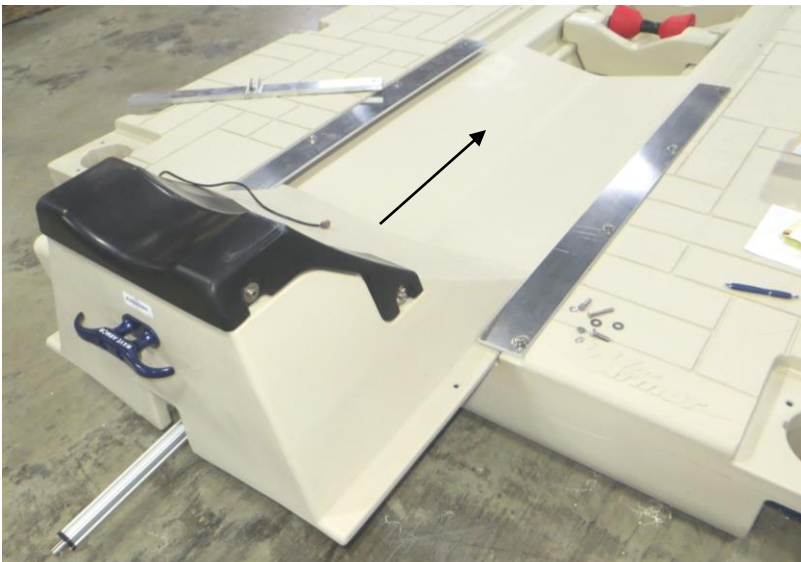
3. Thread the actuator cable through from the bottom of the bow stop to the battery compartment. There is a 4" access hole in the bottom of the bow stop to assist with this.



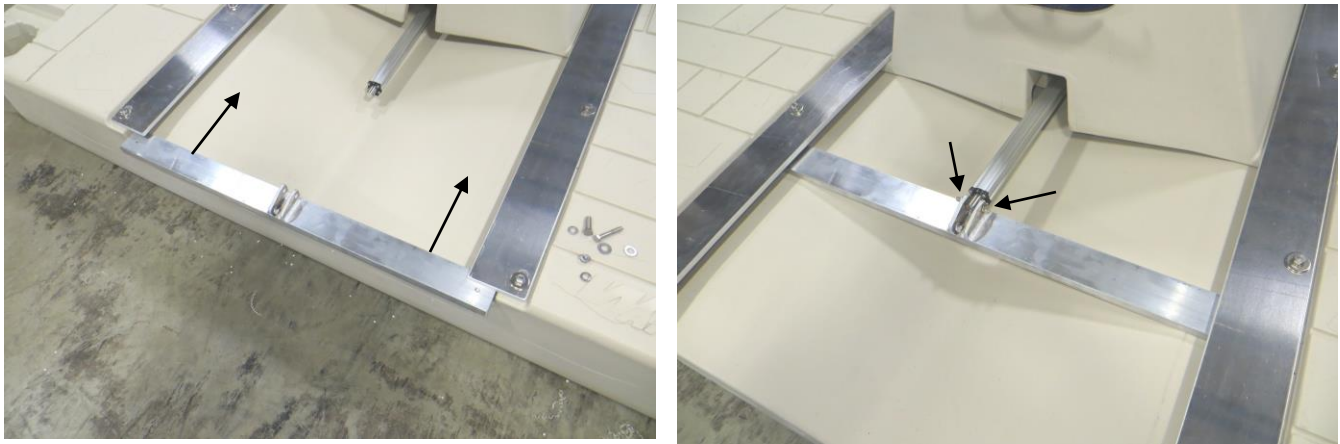
4. Bolt the actuator in place using the 3/8 x 1" bolts, lock washers and flat washers.



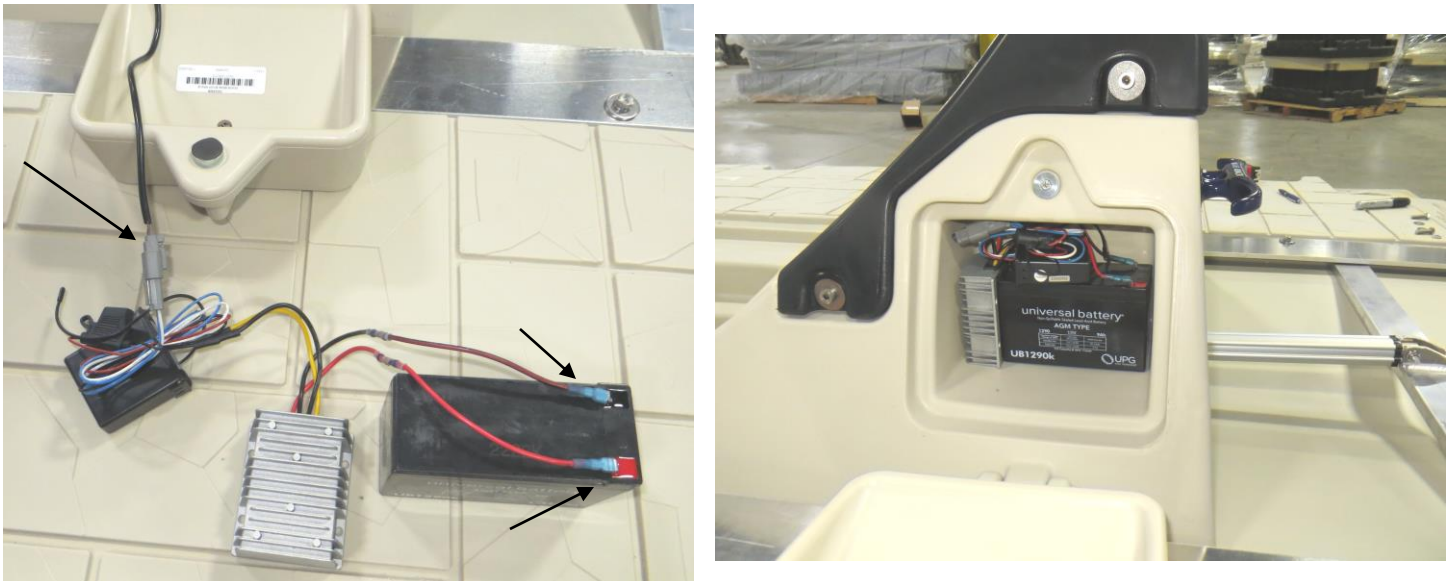
5. Slide the bow stop into the track at the front of the port.



6. Slide the actuator front rail connector bar into the track and attach it to the actuator using the 5/16 x 2" bolt and flange nut.



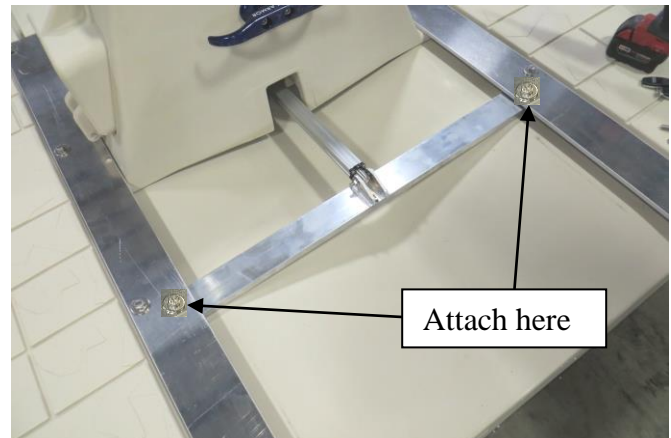
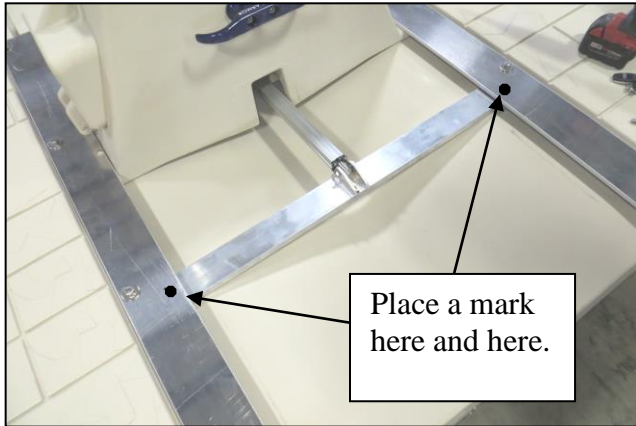
7. Plug the controller and the actuator together. Attach the voltage converter to a 12 volt, 7-9 amp hour lead acid battery or 7.5-15 amp hour lithium battery. **Note: The battery is not supplied.** Dimensions of the battery should be approximately 6" long, 2 1/2" wide and 3 3/4" tall. Neatly slide the controller, voltage converter and the battery into the battery compartment as shown below.



8. Drive the boat onto the port until it reaches the desired position. Keep a close eye on the motor or lower unit while driving onto the port so that the lower unit does not impact the port.



9. Once the boat is in the desired position slide the bow stop forward until it comes into contact with the boat. **Note:** If needed the aluminum rails can be moved to allow the bow stop to be repositioned. Square up the actuator bar in the rails. Measure from the end of the track rails to the center of the actuator support bar on one side and put a mark. Put a mark on the other rail the same distance. Measure in 1" from the edge as shown and centered on the actuator bar. Drill a 7/16" hole at each mark. Attach the bar to the rails using the 3/8 x 1 1/4" bolts and washers.



**Notes:**

The actuator comes with 2 remote controls.

The actuator can be activated by pressing the button on the controller. This will start the actuator to push outward. Press the button again to stop the actuator.

The actuator cannot be reversed until it travels the entire 24" distance. Once it is all the way out it can then be reversed by pressing the button.

Do not use the actuator to pull the boat forward as this will cause parts to fail.

**Disconnect the battery when not in use or hook up a solar panel to keep it charged. If it is not disconnected the system will drain the battery.**