



# PRODUCT ASSEMBLY INSTRUCTIONS:



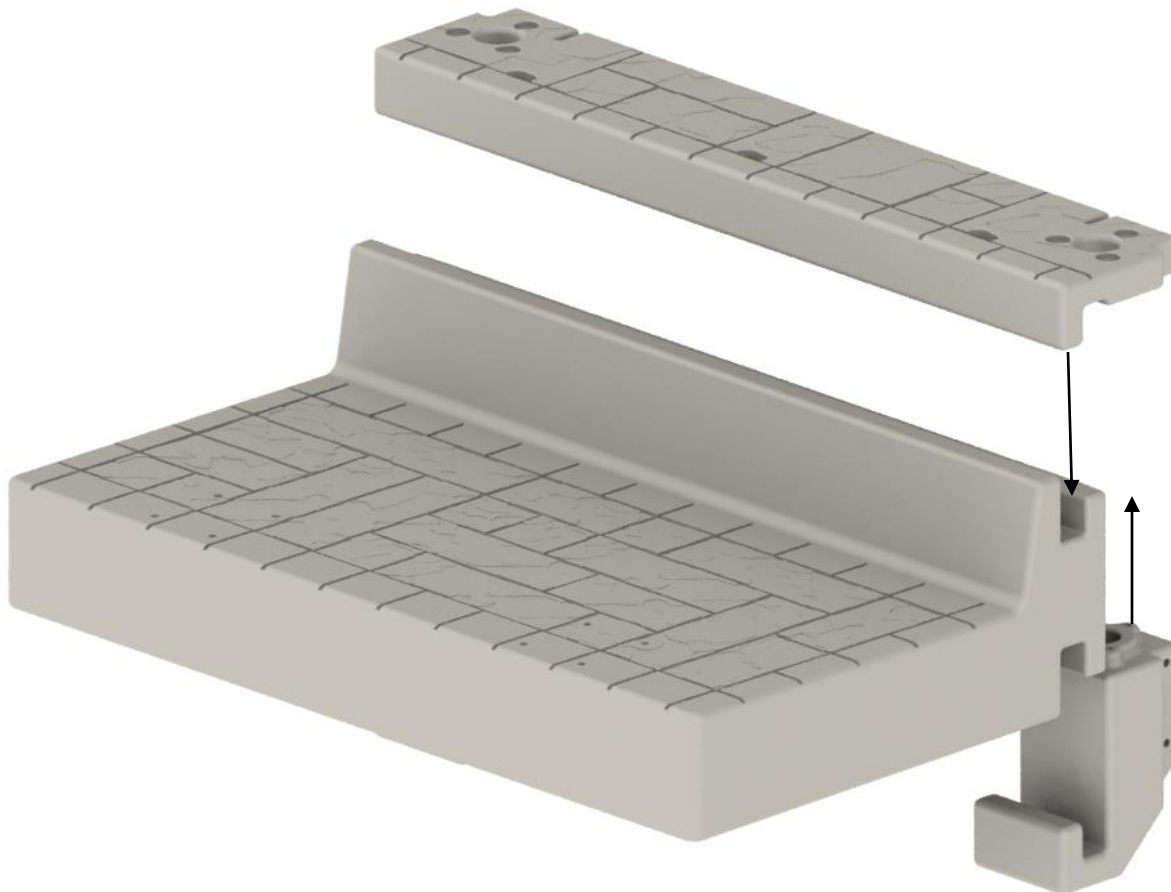
[www.wavearmor.com](http://www.wavearmor.com)

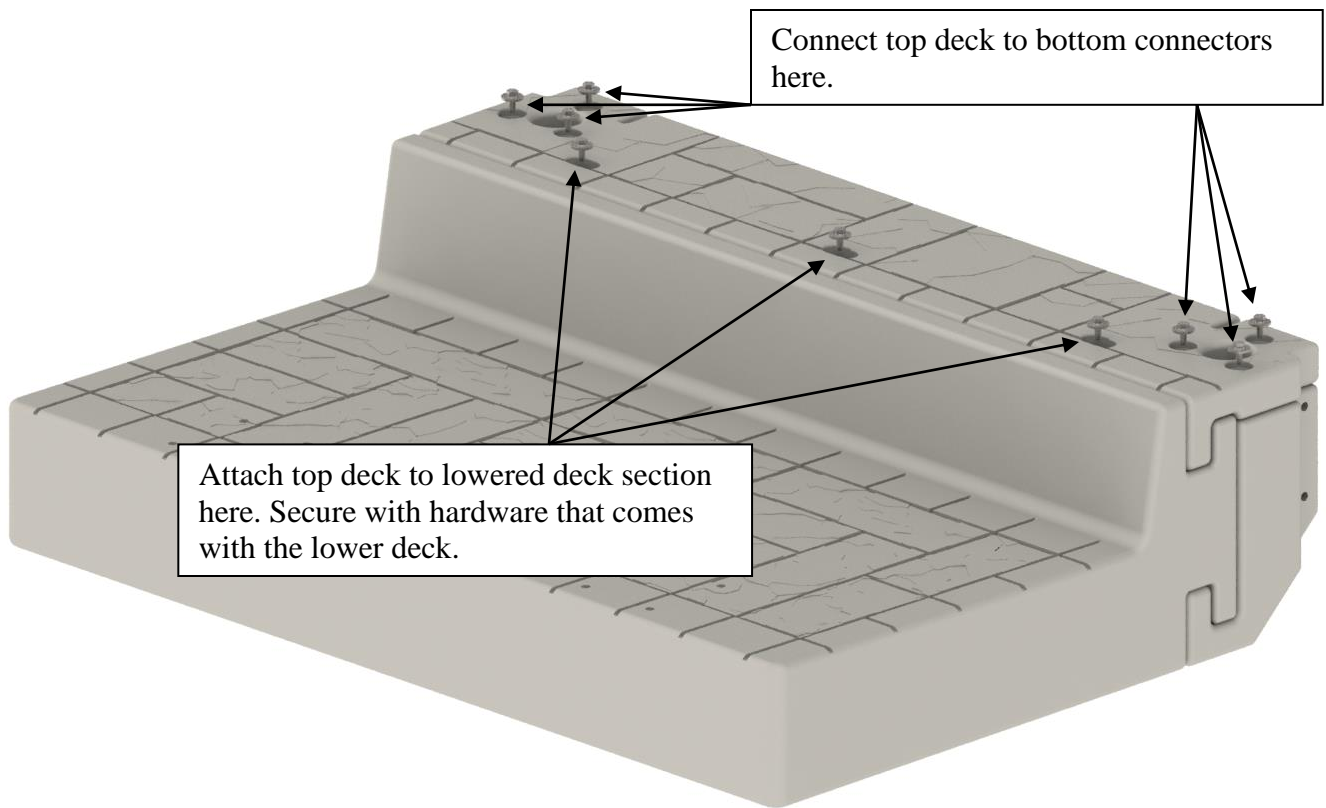
**Item # | Product Name:** 302381 Lowered Deck to Floating Dock Connector Kit

Parts List:	Tools Needed:
1. Plastic Bottom Connector qty 2	1. Ratchet and 9/16" socket
2. Plastic Top/Deck Connector qty 1	2.
3. Galvanized Steel Brackets qty 2	3.
4. 3/8 x 2" bolt qty 6, 3/8" lock washer qty 6, 3/8" heavy washer qty 6	4.
5. 1/2 x 7" bolt qty 4, 1/2" nylock nut qty 4, 1/2" washer qty 8	5.
6. Also required is the Lowered Deck section (sold separately)	6.
7.	7.

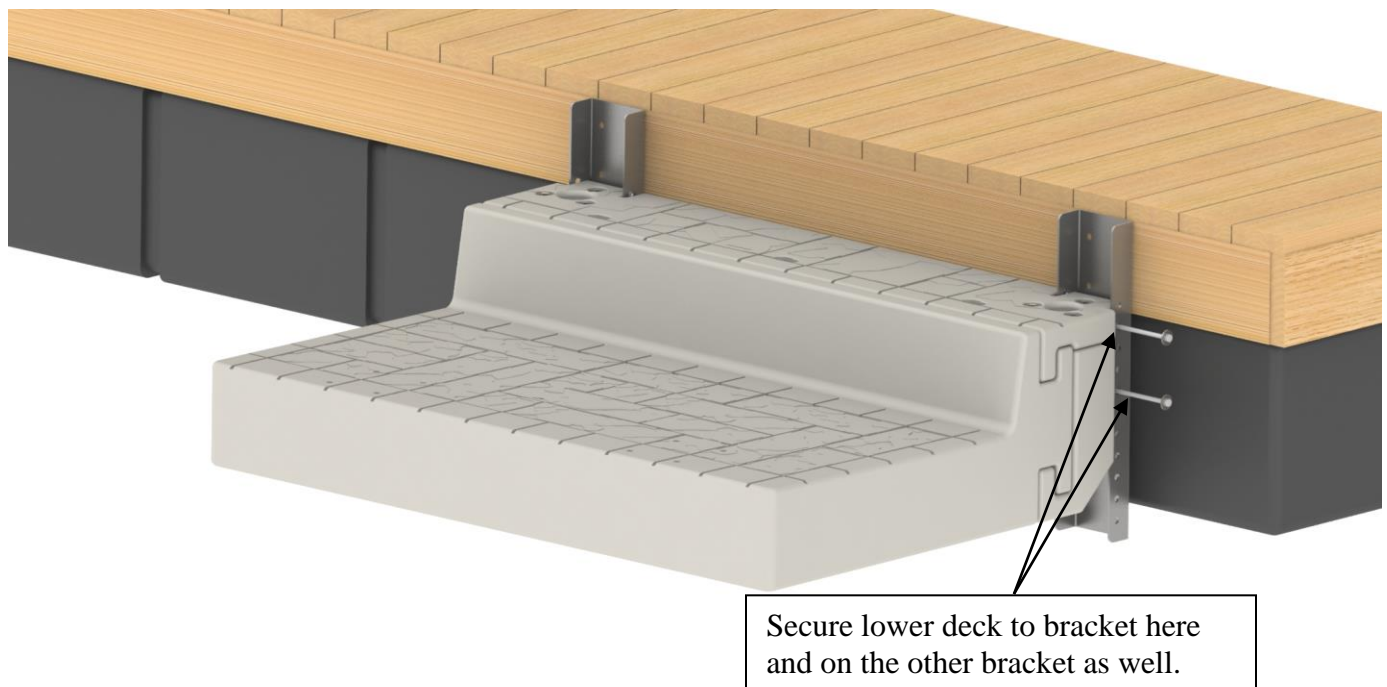
## Assembly Instructions:

1. Attach top deck section to the lower deck section as shown below. The bottom connectors will be at each end of the lowered deck. Secure with 3/8 x 2" bolts, lock washers and heavy washers.





2. Next attach the galvanized brackets to the lower deck section using the  $\frac{1}{2}$  x 7" bolts, washers and nylock nuts. Doing this before attaching the brackets to the dock will make securing them easier.



3. Move the lower deck into position against the floating dock. Attach each bracket securely in at least four places using the necessary hardware (not supplied). Completed installation shown below.

