



PRODUCT ASSEMBLY INSTRUCTIONS:

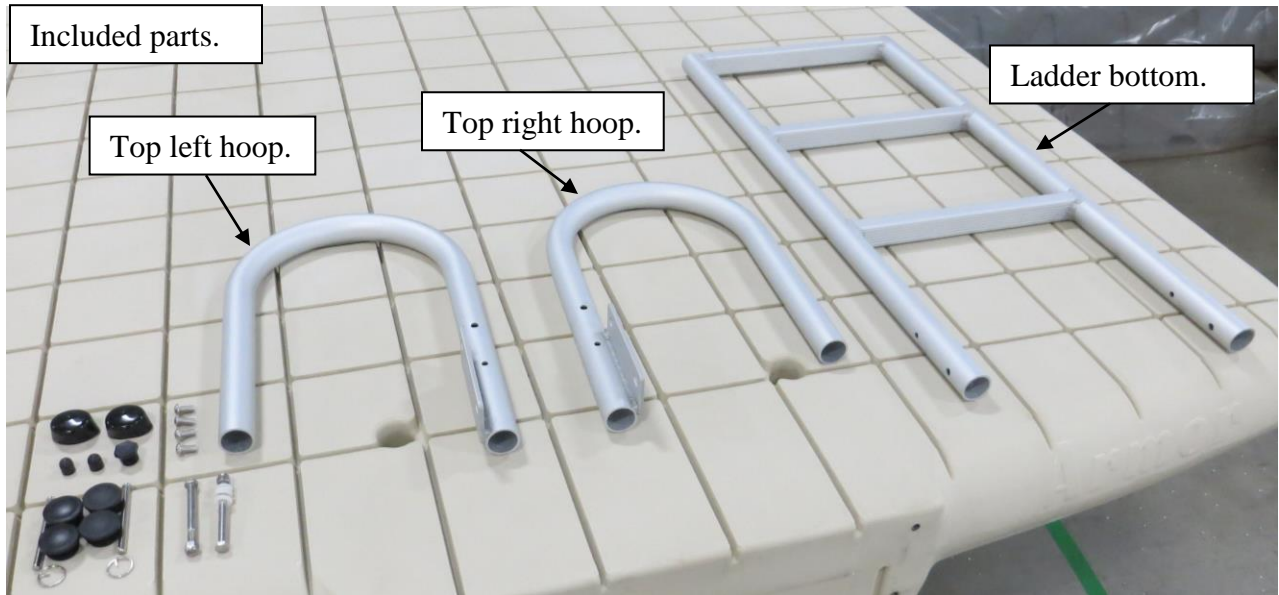


Item # | Product Name: #302563 & 302702 Oasis Raft

Parts List:	Tools Needed:
1. Oasis raft qty 1	1. Ratchet & 9/16" socket
2. Top right ladder hoop qty 1	2. 9/16" wrench
3. Top left ladder hoop qty 1	3. 7/8" wrench or adjustable wrench
4. Ladder bottom qty 1	4. Flathead screwdriver
5. Hardware bag. Contains: 3/8 x 3/4" bolt qty 4, 3/8 nylock nut qty 2, pin ring qty 2, 3/8 nylon washer qty 4, 1 5/8" vinyl cap qty 2, 3/8 x 4 bolt qty 2, 5/16 x 4 clevis pin qty 2, 3/8 vinyl cap qty 2, 1 5/8" plastic plug qty 4, 1/2" drain plug qty 1	5. PTFE Tape
	6. 7/32" allen wrench
	7. Mallet or hammer

Assembly Instructions:

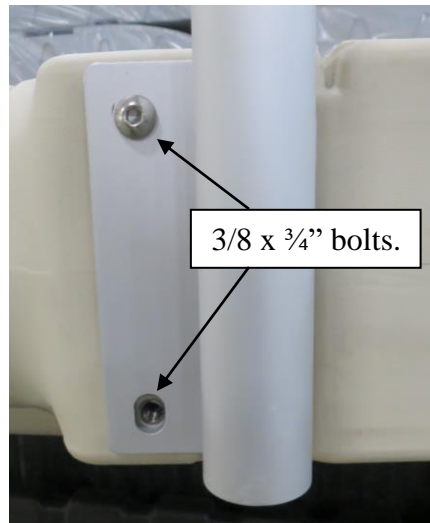
1.



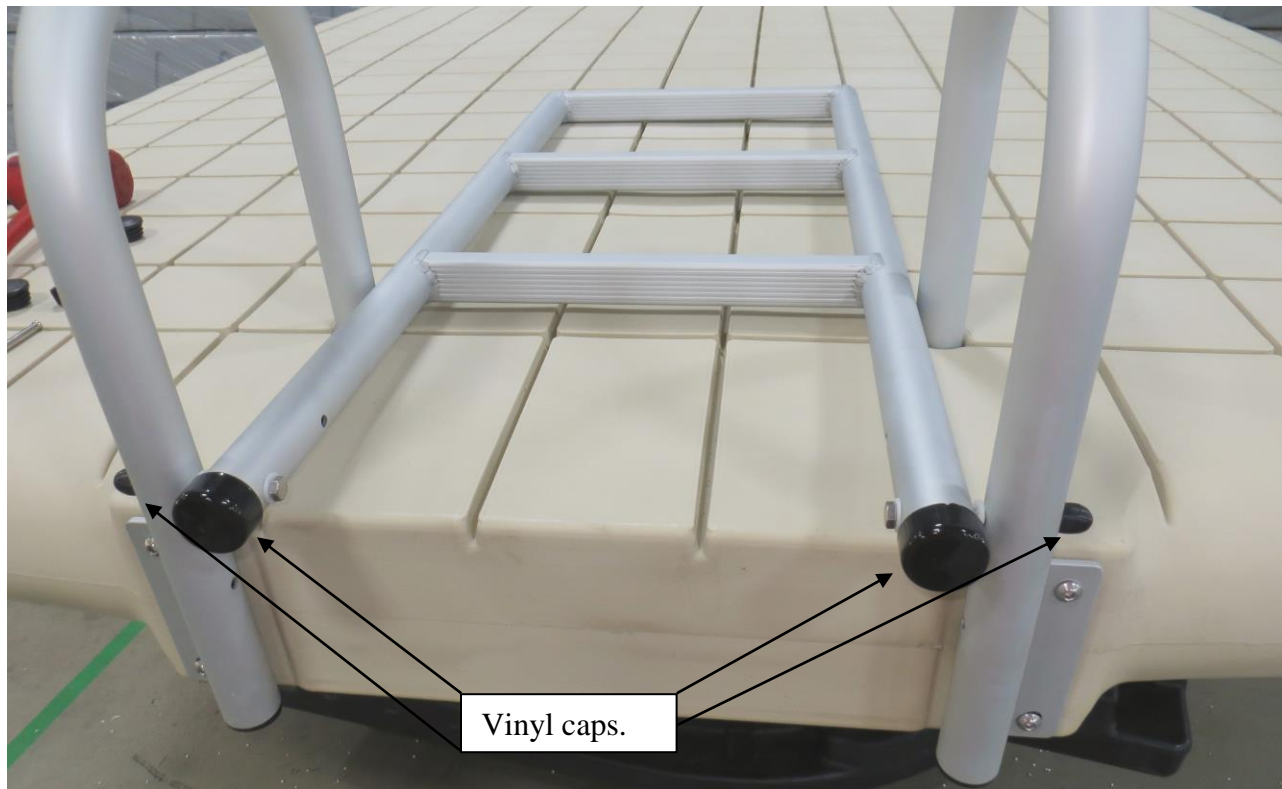
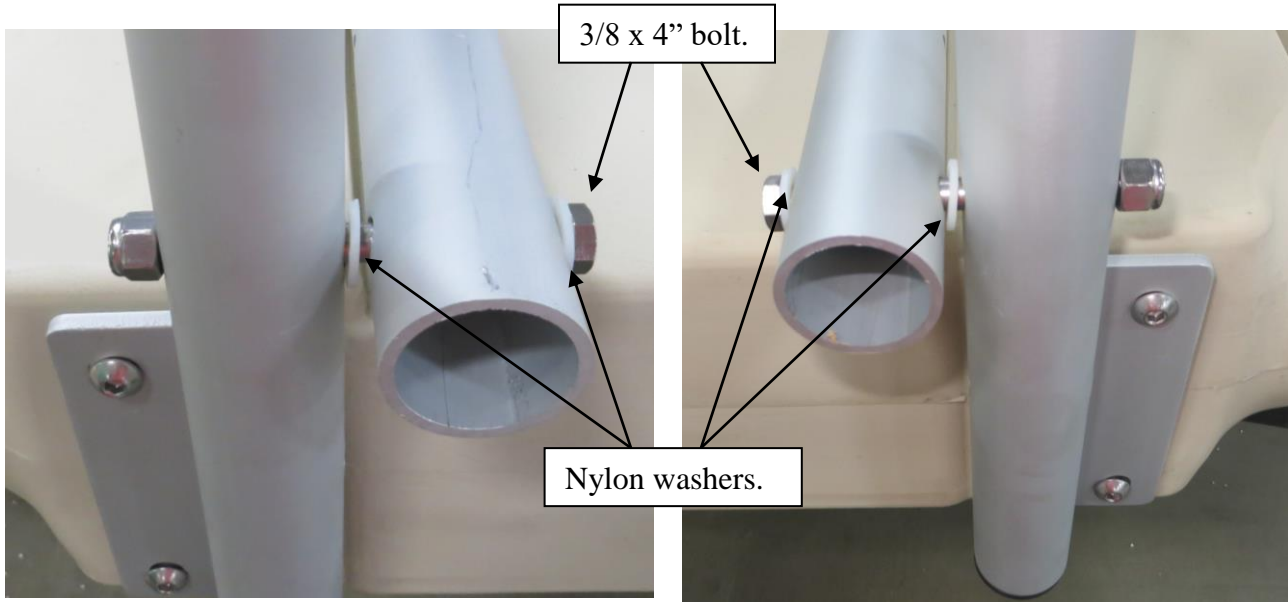
2. Install plastic plugs into the end of the top hoops and the bottom section of the ladder where shown. Install vinyl caps onto the bottom section as shown.



3. Install top right hoop into the raft and secure with the 3/8 x 3/4 bolts using the 7/32" allen wrench. Repeat process for the top left hoop.



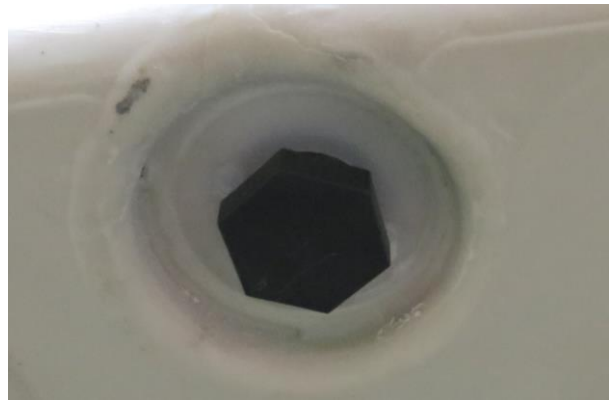
4. Install ladder bottom section using the 3/8 x 4" bolts, nylon washers and nylock nuts. Fasten securely.
5. Make sure vinyl caps are in place on the ladder and the nylock nut.



6. Install the 5/16 x 4" clevis pin into the holes just below the 4" bolts. Secure with ring by prying it apart with a screwdriver and threading through the hole in the pin end.



7. Wrap 1/2" drain plug with PTFE tape or sealant and install into the threaded plastic fitting as shown. Tighten securely with adjustable wrench or 7/8" wrench.



8. Completed installation.

